

# WEATHER

Tuesday, June 7	46	80	0.00
Wednesday, June 8	47	82	0.00
Thursday, June 9	47	79	0.00
Friday, June 10	41	62	0.00
Saturday, June 11	36	74	0.00
Sunday, June 12	34	70	0.00
Monday, June 13	32	68	0.00

By H. K. L.

# The Chelsea Standard

## QUOTE

"Growing old isn't so bad when you consider the alternative."  
—Joseph Chevalier.

ONE HUNDRED-SECOND YEAR—No. 52

14 Pages This Week

THE CHELSEA STANDARD, THURSDAY, JUNE 15, 1972

15c per copy

SUBSCRIPTION: \$4.00 PER YEAR

## Death Claims Active Young Mother of 3

Mrs. George (Wanda) Heydlauff, 151 Orchard St., died Saturday, June 10 at St. Joseph Mercy Hospital.

Born Oct. 11, 1933 in Chelsea, she was a daughter of Harold and Marine Buss Eschelbach. She graduated from Chelsea High School in 1951. She married George Heydlauff June 25, 1955. She was a member of Zion Lutheran church, the church choir, and the Women of Zion. She was in charge of the summer Bible school for several summers. She was a 4-H leader for many years, and a volunteer at the Chelsea Medical Center.

She is survived by her husband; three sons, Mark, Matthew, and Steven, all at home; her parents, Mr. and Mrs. Harold Eschelbach of Chelsea; and one sister, Mrs. Robert (Marilyn) Fischer of Ann Arbor.

Funeral services were held Wednesday, June 14, at 2 p.m. at Zion Lutheran church of Rogers Corner, with the Rev. John R. Morris officiating. Burial followed in Zion Lutheran Church Cemetery.

Memorials may be given to the Zion Lutheran church. Arrangements were made by the Staffan Funeral Home.



MRS. GEORGE HEYDLAUFF

## Four Youths Chosen for Boys State

Four Chelsea boys will be attending the annual Boys State sessions at Michigan State University, June 14 to 23.

The American Legion is sponsoring Jeffrey Schmidt, son of Mr. and Mrs. Richard Schmidt, 14356 Eisenbeiser Dr., and Daniel Houle, son of Mr. and Mrs. Robert Houle, 315 Taylor Lane.

Kirkland is sponsoring Kenneth Schiller, son of Mr. and Mrs. Donald Plumb, 1226 Hatfield Rd., and Norman Schafer, son of Mr. and Mrs. Robert Schafer, 1575 Pierce Rd.

June 18 is scheduled as Visitors Day at Boys State for anyone interested in seeing how the boys operate their own government.

## Baseball Title Hopes Dashed By Carleton

Chelsea's hopes for a Class B state baseball championship were dashed Saturday, June 10 when the Bulldogs lost to Carleton Airport in the second game of the day, 5-1. The Bulldogs defeated Hillsdale in the first game, 6-4. Dave Laskiak and Wayne Walton pitched the game, giving up only two hits. The Chelsea batsmen came up with six hits and only one error.

Things came to an end when Carleton Airport came up with six hits and one error to pull out the game. Ron Sweeney went the distance for Chelsea. Although Chelsea batsmen had five hits, they were slowed by four errors.

The loss brought an end to the Bulldogs' 11-game winning streak. The team has an over-all record of 26-4.

Coach Carl Gonske is already preparing next year's team but it will be a hard job, as he is losing all but two of his regulars through graduation.

## Babe Ruth A Team Defeats Manchester

Chelsea Babe Ruth "A" team defeated Manchester "B" by an 11-1 score behind the strong three-hit pitching of Bill Clark and Perry Johnson. Chelsea struck for four runs in the first inning on two walks and a double by Mike Nadeau and a triple by Perry Johnson.

In the second inning, two walks, followed by Mike Nadeau's triple, netted Chelsea two more runs. In the third inning, a walk to Steve Siebert was followed by a bunt single by Anthony Houle.

After two more walks to Mike Eouty and Paul Wood, Chelsea had forced in another run when Mike Nadeau delivered the third of his four hits to drive in two more runs to make the score 11-1.

Chelsea scored two more runs in the 6th inning on singles by Mike Nadeau and Dan Morrison.

The outstanding defensive plays of the game came from Perry Johnson and Mike Nadeau, who combined to pick off three Manchester runners.



PARTNERS NOW: Daniel Murphy, after work—now a partner with Charles Lancaster, owner since 1948.

## D. Murphy Becomes Partner Of Lancaster's in Drug Store

A familiar face at the Chelsea Drug Store since he was 13 years old, Daniel Murphy has become partner in the business with Charles M. Lancaster, owner since 1948.

Murphy was born in Northfield township. His family moved to Chelsea when he was 11 years old, and his mother, Mrs. Thomas Murphy, still resides there.

He began at the drug store by sweeping floors, running errands, and doing jobs that nobody else wanted to do. He continued to work at the store through high school and college, coming home from Ferris State College in Big Rapids on weekends to work.

He graduated from Ferris in 1958 with a bachelor of science degree in Pharmacy, and returned to work at the drug store as a pharmacist.

Murphy met his wife, the former Carol Jean MacDonald, a professional dancer from Detroit, at the drug store. "She came in here one day to buy ear drops, and she needed a prescription, so I wouldn't sell them to her. But I met her."

They were married in 1959. The Murphys have five children: Dana, 12; Patrick, 10; Ross, 8; Casey, 3; and Brady, 2. They recently moved to 116 East St.

Murphy, a Democrat in a Republican stronghold, has served as Sylvan Township clerk for seven years. For the past 10 years he has been chief pharmacist for Mercy Hospital in Ann Arbor. He is a member of St. Mary Catholic church, where he is in the Knights of Columbus.

Lancaster married the former Helen Grabowski of Chelsea. They have four children: Paul, 22, a graduate of Elmhurst College in Illinois, and a teacher for the past year; Mark, 21, a recent graduate of Eastern Michigan University; Laurel, 18, a sophomore at Albion College; and Tim, 16, a senior at Chelsea High School.

Lancaster has been deeply involved with community affairs during his 24 years in Chelsea. He has served as director of the Spaulding Foundation and the Chelsea Social Services. He has been president of the Chamber of Commerce and the Fair Board.

He has been secretary of the Board of Education. He has served as a member of the Recreation Council, president of Kiwanis Club, and the Washenaw County Pharmaceutical Association. He is presently treasurer of the Church Council of St. Paul United Church of Christ.



JOHN REED

## Dana Corp. Names New Plant Manager

W. E. Herning, general manager of Dana Corporation's Power Equipment Division, has appointed John H. Reed to the position of Plant Manager for the Division's Chelsea manufacturing and assembly facilities.

Reed's previous assignments include Section Supervisor, Plant Metallurgist and, most recently, Division Superintendent for the Toledo Transmission Division of Dana.

His training in engineering, metallurgy and business administration has been acquired at the Universities of New Mexico and Toledo, as well as from several specialized Industrial and Mechanical Engineering Seminars.

A past president of the Dana Management Association and a member of the American Society for Metals, Reed has also coached baseball for four years in Toledo's City League.

## Recreation Program Needs Additional Playground Helpers

The Summer Recreation Program needs playground helpers for its playground activities program for elementary school children on weekday afternoons from 1 to 3 p.m.

There will be various games and relays for groups, and individual games too. If weather permits activities will be held at the South school playground on Monday and Tuesday.

## Vacation Bible School Slated at Immanuel Church

Nightly Vacation Bible school will be held at Immanuel Bible church June 19 to 23, beginning at 6:30 p.m. A contest centering around baseball gets thing underway.

The theme, "We Worship God," is taught in graded classes with handcraft for all. Mrs. Huey Hardy is in charge, with Mrs. Dave Peoples directing music. Mrs. LeRoy Johnson, former missionary to Korea and Trinidad, will give nightly missionary stories on "Devils and Cannibals."

All children ages 4-14 are cordially invited. For more information call 475-8936.

## Band Rehearsal Scheduled Tonight

Band Director Warren Mayer has announced that there will be a rehearsal for the high school and community band at 7:30 p.m. Thursday, June 15 (tonight) at the Chelsea High school band room. Everyone is welcome.

## Pilot Program Underway in Meals for Aged

Church Women United of Chelsea, the Jaycee Auxiliary, and the Chelsea Methodist Home hope to get a regular program of meals for the aged started by September, 1972. The Home is sponsoring a pilot project offering very limited services to see what kinds of problems will arise.

The following is a list of items that will be incorporated in the program when it gets into full operation: 1) They plan to serve one hot meal a day seven days a week, year-round. 2) Cost to each person who can pay will be \$1.15 per day. Requirements will be that a person be over 60 years old and reside within the Chelsea School District. 3) Volunteer drivers will pick up those who are able each day to eat together in a pleasant environment. Special dietary requirements, such as diabetic, low sodium diets will be met. Meals will be served in a small dining room at the Methodist Home.

Movies, talks, music, and other programs will be planned for participants' enjoyment. Programs will be short. 4) Those who are not able to get out for the group meal at the Home will be served in their own homes. (Nutrition studies done with elderly people have shown that each person gets more nutritive value out of a meal when eating with another person than when eating the same meal alone.)

This program is designed to be of help to anyone who finds it difficult to prepare his or her food and maintain a well-balanced diet, whether temporarily after hospital discharge, or on a permanent basis. They expect to feed 50 people eventually.

A Project Director will be hired to work with the Methodist Home, co-ordinate the volunteer drivers, routes, answer requests for service, handle bookkeeping, and other jobs. This person will also be needed to plan and carry out the social and educational aspects of the project. Application is being made for government funds under the newly signed Title 7.

The steering committee consists of Carolee Hoffmeyer, chairman, Anne Steinaway, Mary Ann Merkel, and Sybil Johnson. The Advisory Board consists of the above-named women and Edward H. Terry, executive director of Retirement Homes of the Detroit Annual Conference of the United Methodist Home; Dr. David Peterson, School of Gerontology, University of Michigan; the Rev. John R. Morris, pastor of the Zion Lutheran church; Arthur Steinaway, Jaycee; and Dr. Charles F. Krause. Others may be added in the future.

## Irwin, Schafer Re-elected to School Board

school board election results — Incumbents Donald Irwin and Robert N. Schafer were voted to serve four-year terms on the Chelsea Board of Education following the annual election Monday, June 12.

A scant 20 percent of the eligible voters turned out for the election. Fred Mills, business manager, reports that only 406 of the 2,000 voters participated in the election.

Tallies are: Donald Irwin, 238; Robert N. Schafer, 235; Thomas B. Lancaster, 181; Jack Merke, 1 write-in; Byce Fauble, 1 write-in; Clark Bushnell, 1 write-in; Doug Stewart, 1 write-in; and three spoiled ballots.

## Women's Softball Team Still Needs Player Personnel

The Chelsea women's softball team played its first game Thursday, June 8, losing to Parkview Hospital of Ann Arbor, 23-19.

Pitchers for the Chelsea women were Nadine Packard and Noreen Collins. Hitting was sparked by home runs by Dee Dee Ringe, Debbie Stahl, and Nadine Packard.

Although a loss, Coach Jerry Ringe feels that the team has made much improvement and predicts that the team will have a successful season.

The women will face another team from Ann Arbor Thursday, June 15 (tonight) at South school at 6:30 p.m. They are still building up team strength, so if anyone's missed out so far and wants to join, come on down.

## Church Women Seeking Food For Migrants

Church Women United of Chelsea, in response to an appeal from the Michigan Migrant Ministry, is sponsoring an emergency food collection for migrants in its member churches.

Despite the governmental programs which assist migrants, commodities will be needed for emergency distribution to "fill the gaps" these programs do not fill, according to the Michigan Migrant Ministry.

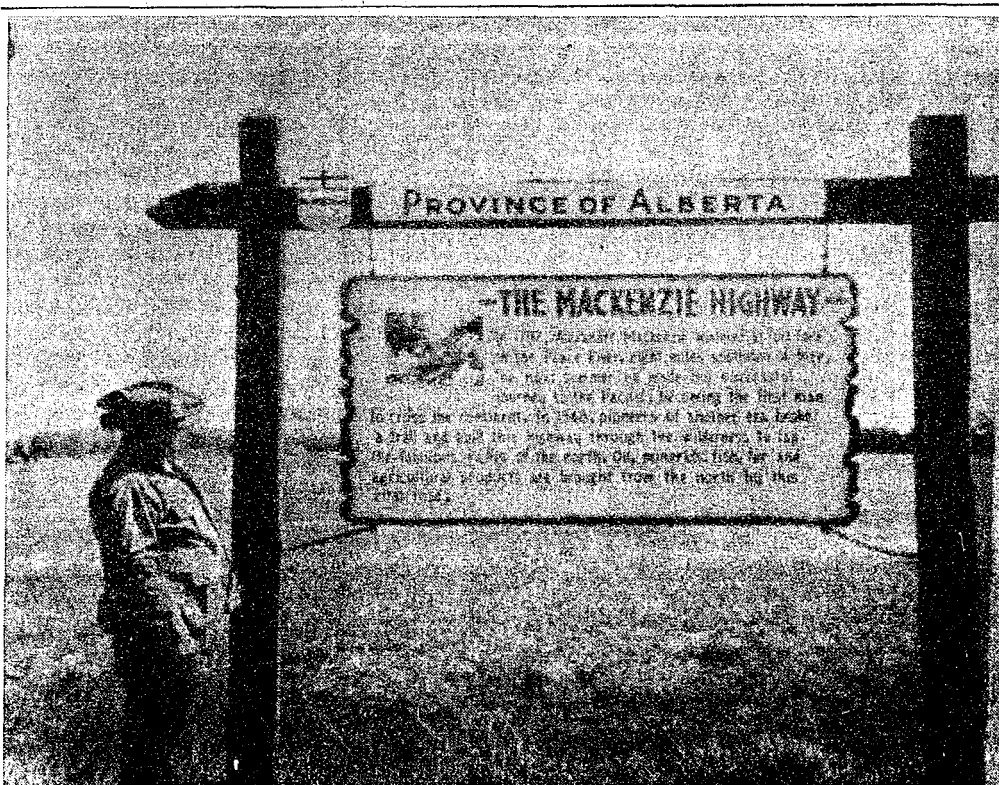
One of the reasons for these "gaps" will be the new regulations for the Food Stamp Program, in effect this summer, which will in many cases delay the initial purchase of food stamps up to 30 days.

The following foods are particularly needed: flour, rice, dry pin-to beans, masa harina (corn meal), oatmeal, dry cereals, coffee, sugar, salt, canned milk (no powdered milk), peanut butter, jelly, cooking oil, and canned vegetables and fruits. No home canned foodstuffs or donated cans may be distributed, according to Department of Agriculture regulations.

Other items much needed and not supplied through the food stamp program are detergent, bath soap, toilet tissue, and blankets.

Key women of Church Women United assisting with this program are: Mrs. LeRoy Buss, St. John's UCC; Mrs. Harold David, St. Paul UCC; Mrs. Harold Eismann, Zion UCC; Mrs. Judson Goltz, St. Lutheran; and Mrs. Jack (Mary Ann) Merkel.

(Continued on page eight)



DON TURNER, who left Chelsea May 22 on historical marker that tells the history of the MacKenzie Highway.

## Don Turner Reports from Peace River Valley in Canada

Word has been received from Alaska-bound Don Turner, who left Chelsea May 22 for his annual adventure. Turner reports that he has been "coming up the miles toward the northland."

Turner crossed the border into Canada at Sauk Ste. Marie and headed west on the Trans-Canada Highway, stopping at Arrewa Nipigon Kakabeccha Falls, Ont., then moving into Manitoba, Saskatchewan, where he headed north to the McKenzie Highway, which leads to Canada's Northwest Territories. He has stopped at several interesting and historical spots.

The McKenzie Highway, Turner notes, is named after one of Canada's noted explorers, Alexander McKenzie, who laid claim to all of Northwest Canada for Britain in 1792 and '93, when he reached the Pacific Coast at

ter making a wrong turn and taking the river that led him to the arctic in his search for a water route to the Pacific Coast. The large river that drains north-west Canada to the arctic also bears his name.

After reading James Oliver Curwood's books of the far north, Turner has been interested in the area covered by the books, especially in "Northwest Mounted" and "The Valley of Silent Men."

He is now in the area covered by the latter. It is in this region that the book starts, west and north of Edmonton, Alberta, around Highway 43. The McKenzie Highway starts at "Valley View," going by Peace River, which winds north by Highway 35 at Grimshaw.

It is not, he states, the end of the world. "If you look again, this whole area is part of Can-

ada's great farm ranching and wheat belt. Now it is quite an oil and gas center, with more exploration under way in that line."

He stopped to fish at "Lady Evelyn Falls" in the Northwest Territories, where there is a campground noted for its fishing. Pike, pickerel, and the arctic grayling are found just below the falls. "So," he reports, "I had some fun. The arctic grayling is my favorite fish in the north."

Turner informs us that Lady Evelyn Falls looks a lot like Michigan's Tahquamenon Falls in the Upper Peninsula, both in size and the direction that it faces. Its height is 68 feet.

After getting his fill of catching and eating arctic grayling and pickerel, Turner went on to Hay River, a small but old settlement. (Continued on page three)

## Dare Edwards Granted Patent On Oven

Chelsea has its very own invention-maker in Dare Edwards, 5450 Conway Rd. Edwards has received U. S. patent 3,644,708 for his portable heating oven for pre-heating rigid vinyl sheets.

Rigid vinyl sheets are used in the housing industry for external covering purposes. It is often necessary to shape rigid vinyl material on the job in order to adapt it for use.

Edwards has devised a simple, inexpensive, lightweight portable electric pre-heating oven. With his invention, the vinyl sheet is inserted through the open door of the oven and placed on the heat transmitting plate and under a heat retaining and equalizing board.

After the sheet has been placed in the oven it will be uniformly heated to working temperature, in six to ten seconds, depending on the number of bends needed to fabricate the desired shape.

In the past, homes that were being covered with solid vinyl had to have special trim work done with aluminum. This practice has been unsatisfactory to homeowners. New homes being covered with solid vinyl siding may now have inexpensive solid vinyl trim fabricated on the job to fit the woodwork with the factory finish all have desired in the past.

## Swimming Lessons Available Through Recreation Program

The Recreation Department will offer swimming lessons every morning. For information, contact Jim Tallman, 475-7088.

There will be swimming in the afternoon, with a 35-cent bus fee. The bus will leave at 1 p.m. and return at 3 p.m. It will leave the high school and make stops at the old junior high site, and at the corner of Chestnut and M-52.



PLANNERS FOR HOT MEAL PROGRAM: These women are involved in the preparations for a hot meal program for the aged, hopefully, in progress by September. Pictured left to right are: Mrs. James (Caralee) Hoffmeyer, Mrs. Arthur (Anne) Steinaway, Mrs. V. O. (Sybil) Johnson, and Mrs. Jack (Mary Ann) Merkel.





## Washington Report by Congressman MARVIN L. ESCH

In this era of instant communications, instant foods, and instant travel, the American people have begun to expect instant everything. We expect candidates to have instant solutions to our domestic problems. We expect our Presidents to be the miracle men who will instantly solve all international tensions and create a stable peace.

Our reactions to the recent summit conferences bear this out. As I said following the summit in China, we somehow expected 25 years of enmity to disappear in a day. It didn't, of course, but substantial progress was made. Following the Moscow summit, once again there has been a faint feeling of disappointment. Surely a great deal was accomplished. But all our problems have not been instantly solved; all our years of conflict have not come to a sudden end.

On no issue is this kind of reaction more evident than the Strategic Arms Limitation Agreement. When the SALT agreement was signed by the President and the Soviet leaders, we heaved a collective sigh of relief. Suddenly the specter of nuclear war was lightened; it was as though a great burden had been lifted, not only from us, but from all the people of the world.

Then in the week following the first surge of emotion we began to examine the agreement a little

more closely. The debate in Congress and throughout the country has illuminated the fact that the agreement is quite limited in nature. It is clear that the arms race has not come to a sudden halt—it has merely been slowed. Our military expenditures may, in fact, not be reduced considerably by the agreement. The Pentagon has already come to the Congress to ask for increased funds for new weapons systems.

That is, of course, just what the President told us when he came back to the United States. The agreements reached in Moscow are only a foundation—they are not a final solution. They are a start—not an end in themselves. There are many problems in our language which express it—a journey of a thousand miles starts with a single step; mighty oaks from little acorns grow.

The SALT agreements are not a millennium. They are, nonetheless, extremely significant. They are deserving of our strong support and should be ratified immediately. They should also serve as an inspiration to us to work for further agreements, to reduce the arms race and the terror of nuclear war even further. That is a goal to which the entire nation should be committed. We must not lose sight of that goal in the debate over the specifics of this pact.

## Uncle Lew from Lima Says:

DEAR MISTER EDITOR:

You recollect in my piece a few weeks back I reported where the feller had looked up the matter of all the minorities clubbing together to be majorities. That discussion must of stuck with Clem Webster, cause he come to the session at the country store Saturday nite with more on the minority-majority question.

Clem got on the agender last and allowed that the American in

the middle was gitting to be a minority, and furthermore if the country keeps on the way it's headed the Middle American is going to be as extinct as a dodo. Clem was of the opinion that the feller in the middle gits it going and coming from all sides. And being in the middle, Clem allowed, is a problem from age to income and everything between.

The young git schooling and training, and no end of problems is fixed for them. The old git a heap of attention, Clem said, and some real benefits besides not having to pay taxes on his life. In the middle, the working, tax-paying average citizen, that don't git no relief, was Clem's words.

Actual, Mister Editor, all the feller is well on the downhill side of 70, and none ever made enuff in their working years to be called middle class, middle income or a thing, but Zeke Grubb, fer one, was agreed with Clem. They is a heap of benefits for older folks, Zeke allowed, like help with doctor's bills, so he couldn't go along with Zeke on that point. But as fer the Middle American gitting the squeeze, went on Zeke, that was hitting the nail on the head.

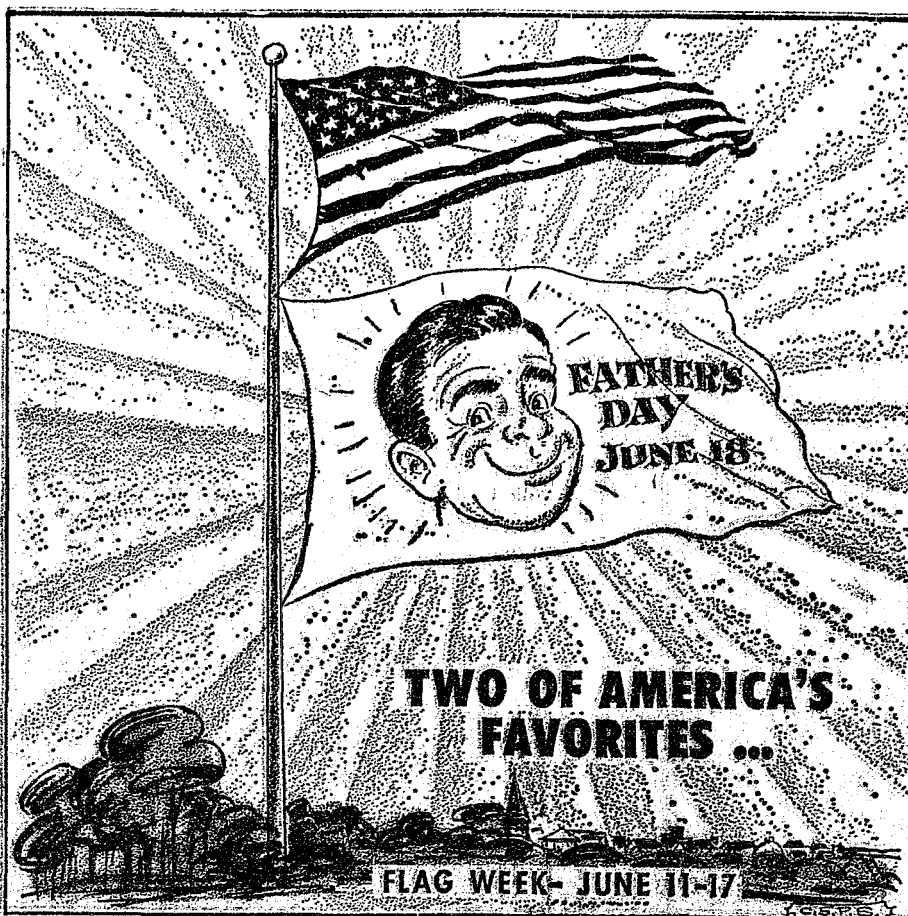
Use to be, said Zeke, everybody was afraid of being pore. Now, with all the house rents, medical and dental care, college expenses and everything else based on income the only way to git ahead in this country is to be pore. The less you got the more you git, said Zeke, and all the feller in the middle can do is pay the bills.

Practical speaking, broke in Clem, the average working man is in bad shape cause he's got what you could call awkward income. He makes too much to qualify fer programs so he can live as good as the pore, and he don't earn enuff to live as good as the rich that can hire lawyers to look fer tax loopholes. It actual has got where a feller on a job can't afford to git a raise cause the Government would take out more than the employer put in, Clem allowed.

The feller went round and round on the matter, Mister Editor. Final, Bug Hookum said he had saw where the idee of designing yore own check is big all over the country, like one feller has a picture of him kissing his new wife on his alimony checks. Bug said Middle American needs a picture of Uncle Sam holding his hand out.

Yours truly,  
Uncle Lew.

Ignorance is not an asset to anything.



## MICHIGAN MIRROR

By Elmer E. White, Secretary, Michigan Press Association

### Drive Doomed

Those who want to see Michigan adopt a one-house legislature must wait at least two years to get the job done.

The drive launched more than a year ago by State Rep. Joseph Swallow, R-Alpena, is far short of the 300,000 signatures it needed to get on this November's ballot.

The indecision which was rampant in the legislature for most of last year over the income tax increase and other matters sparks hope in some backers that the drive might yet succeed.

That hope was fanned further early in the effort when the Michigan Jaycees said they'd help circulate the petitions for the one-house drive.

But the steam went out of the movement about the time the first snow hit the state last fall, and it never got back on the track.

There are several reasons for the failure of the campaign to get the one-house issue on the ballot this fall.

The most important centers around money—Swallow just could not generate enough of it.

Experts say it costs about \$50,000 to conduct a petition drive

to place successfully a constitutional amendment on the ballot. That kind of financing just couldn't be found. Nearly all potential sources for support have a stake in legislation, and they couldn't afford to get current legislators mad at them.

Swallow had to rely on \$1 and \$5 contributions, and there just weren't enough of them to hire the staff required to oversee such a drive and make sure petitions get to those who want them and are collected properly.

A second reason is that the Jaycees were not decisive or unanimous in their efforts to help the drive.

After the state organization voted to help the drive, many local chapters wanted to debate the subject rather than begin immediately to circulate the petitions. Some local chapters voted not to go along with the state unit. Most of them just never put much work on it.

Also hurting the drive were the efforts of many legislators who started working on people in their home districts to make sure they didn't help with the petition drive.

Many legislators believe that vot-

ers would adopt the one-house proposal with glee if it ever got on the ballot, and they worked to make sure it didn't get there.

So now, it's wait till next time as far as the one-house backers are concerned. And they can take some hope and solace from the fact they got further this time than they ever did before.

### Milliken Surprises

Gov. William G. Milliken, who has accumulated a quiet spoken "nice guy" image in his years in public life, has been surprising people lately with a much more militant stance on public issues than he has ever taken publicly.

The most notable incident came recently when the Governor pointed out Senate Highways Chairman James Fleming of Jackson and delivered a barrage of criticism at him.

Milliken lambasted Fleming because his committee had failed to do anything with the Governor's transportation package, which passed the House in February.

He felt Fleming was only trying to kill the package and said it was time for him to get moving.

Not only that, but the Governor said his public criticism of Fleming was only "one of the levers available to him as Governor, and that he planned to pull how many levers it took to get the bills out."

Aides say his more public demonstrations of displeasure came only after a series of more private attempts failed to produce any action.

"He has talked that toughly in private to other legislators before," said one assistant. "For example, he did it when the package passed the House. It's the first time he has had one legislator stalling like this on such a major issue and as a result became the first time he publicly spotlighted one person like that."

Most of Milliken's problems as Governor have been of his own making—that is, they have centered around programs such as education reform and transportation reform that he proposed.

The proposals, designed to meet mushrooming problems, have called for a great deal of change, something that always meets resistance.

By his tougher public stances, the Governor is showing he truly means to get his programs passed.

## JUST REMINISCING

Items Taken from the Files of The Chelsea Standard

### 4 Years Ago...

Thursday, June 20, 1968—

Boy Scout Troop 465 held a Court of Honor Tuesday evening, June 11 at North Elementary school during their regular meeting for Ed Dieman, Carmar Slocum, Rick Foyick, and Tim Marzec, who were made First Class Scouts.

North school recognizes Safety Patrol boys David Alber (Captain), Gary Wellnitz, Bob Hercules, A.J. Hale, John Schafer, Harry Polch, Mike Gramba, Mike Pelt, Matt Marzec, Steve Canell, Mike Keller, Mike Hines, Victor Steinbach, Jack Hackworth, Ishmael Picklesimer, Mark Higgins, Chris Rabbitt, Ronald Kiel, Richard Pryer, Terry Ellenwood, Tom Ball, Randy Romine, Gary Stevens, Steven Bennett, Kevin Dorer, Duane Luck, Karl Gauss, Steven Hanse, Tim Pryer, Tim Eder, Dan White, Dale Heydlauff, Billy McClung, and Tom Wacker.

Honor graduates for the class of 1968 are Shirley Howard, Joanne Fisher, Kathy Fulk, Sandra Eisele, Suzanne Knickerbocker, and Carol Hepburn.

Mrs. Effie Scott, owner of the Polly Ann Shoppe on Main St., recently turned the key to the store over to her daughter, Mrs. Helen Jane Kruse, and announced that she will retire after 11 years in the business.

### 14 Years Ago...

Thursday, June 19, 1958—

Steering committee for the Chelsea Community Fair Board includes Everett Van Riper, J. V. Burg, II, Rolland Spaulding, John Brooks, P. G. Schaible, Jr., and Alfred D. Mayer.

Ellen Kusch, daughter of Mr. and Mrs. John Kusch, is attending Wolverine Girls' State on the University of Michigan campus at Ann Arbor this week as a representative of Herbert J. McKune Unit No. 31, American Legion Auxiliary, and Earl Heller and Patrick Merkel leave today to attend Boys' State on the Michigan State University campus. East Lansing. Earl is the son of Mr. and Mrs. Carl Heller, and Patrick is the son of Mr. and Mrs. Ferd Merkel.

Sixteen senior Girl Scouts of Troop 71 were awarded carved pins at a Girl Scout Court of Awards held at North Lake Methodist church Monday evening, June 9. They are: Sandra Abell, Linda Burghardt, Carol Cameron, Sue Eisenbeiser, Susan Grossman, Diane Hayes, Diane Holmes, Kathryn Kinde, Nadine Lentz, Darlene Meppaus, Carol Reith, Kary Ruciniano, Donna Sherman, Mary Anne Sorensen, Mary Anne Steger, and Maketa Young. Mrs. Leslie Eisenbeiser and Mrs. Warren Eisenbeiser are the leaders of Troop 71.

Carol Cameron, Charles Cameron, Kathryn Kinde, Ann Schmunk, and Donna Sherman left at 9 a.m. Sunday by chartered bus to attend the Methodist Youth Fellowship Institute of the Ann Arbor District held this week at Lake Louise near Vanderbilt.

New officers of the South Sylvan Extension Club are Mrs. Oscar Widmayer, chairman; Mrs. Everett Van Riper, vice-chairman; Mrs. Leo Merkel, secretary-treasurer; Mrs. Alfred Juengens, project leader; Mrs. Arthur Grau, recreation leader; and Mrs. Reuben Lesser, committee chairman.

### 24 Years Ago...

Thursday, June 17, 1948—

Three Chelsea girls received their diplomas as graduate nurses from Mercy College of Nursing in Detroit at commencement exercises held Saturday afternoon at 2:30 p.m. in McAuley auditorium. All three were cadet nurses. The three, Barbara M. Buehler, Phyllis E. Hopper, and Marie E. Winter, are all graduates of Chelsea High school with the class of 1945. Herbert J. McKune Post No. 31, American Legion Auxiliary, is

sponsoring Donna Kalmbach, a Chelsea High school junior, to Girls' State, which is being held in Ann Arbor, June 15 to 22.

Henry C. Schneider, 149 E. Middle St., is one of the 142 surviving members of the University of Wisconsin class of 1898.

Among the graduates of Michigan State Normal College at Ypsilanti who received degrees at exercises held in Pease auditorium at 4 p.m. Sunday were Mrs. Betty Hall, Charles Lane, Virginia Spaulding, and Esther Riemen-

schneider. Officers and the Board of Directors for the Chelsea Community Fair are as follows: Joe T. Merkel, president; John Gluck, vice-president; Marshall Richards, secretary; Carl Mayer, treasurer; Charles Downer, Paul Niehaus, Darwin Downer, Mrs. R. Riemen-schneider, and Mrs. Stanley Beal. Robert Niehaus, who has been a clerk at Schneider's Grocery for several years, has purchased the Sawdy Grocery and Market business in Grass Lake.

### 34 Years Ago...

Thursday, June 16, 1938—

Music pupils of Mrs. Paul F. Niehaus will appear in recital tonight at 8 p.m. at St. Paul's church. Participants include: Mary Margaret Paul, Paul Junior Niehaus, Jane Downer, Barbara Eaton, Paul G. Schaible, Joann Pierce, Marian Eisele, Marceline Hinderer, Marjorie Gilson, June Marie Vail, Arlene Martin, Edna Steinaway, Caroline Breitenwischer, Jeanne Meserva, Harriet Heininger, Helen Grabowski, and Lawrence Dietle.

Officers of the Lutheran League for the ensuing year are: Eldine Hawley, president; Robert Schefel, vice-president; Willard Mann, secretary; Wayne Goodrich, treasurer; who were installed by the Rev. Theodore Schmale.

Representatives from the four local churches met Monday evening at Kolb's Hall to complete plans for the opening of the Church Softball League. Players include: Tom Lyons, William Rademacher, Bunny Lyons, Francis Hafner, Vic Hindelang, Claire Staphis, Stewart Roy, Jim Collins, Andy Policht, Jerry Dorer, Bob Forner, and Junior Birch, St. Mary's; Malcolm Novess, William Stierle, Arthur Lindauer, Luther

Kusterer, Bobby Strieter, Maynard Oesterle, Stuart Dingle, Ralph Dingle, Harold Hanselman, David Streiter, Paul Schneider, Lawrence Niehaus, Norman Niehaus, Charles Bahmiller, Earl Grieb, Paul Eisele, Lawrence Dietle, Frank Novess, and Jim Barkley, St. Paul's; Wilfred Lane, Frederick Bolser, Rolland Spaulding, Russell Olson, David Eaton, Bud Barber, Dick Kinsey, Charles Lane, Larry Tisich, Walter Gage, Terry Kennedy, and Bud Rabley, Congregational; and Junior Miller, Jack Miller, Jim Daniels, John Fletcher, Rolly White, Dick White, Archie Wilkinson, Raymond Ives, Dick Kern, Harry Kiroh, and George Kiroh, Methodist.

**AIRLINES SEEK HELP**  
Washington—Major airlines have urged the government to increase the federal guard force at airports and finance weapons detection devices to help foil hijackers.

**SERVICE WITH YOU IN MIND**

Many styles. Reasonable prices.

PAY LESS FOR THE BEST

**WINANS OPTICAL**

Phone 475-1233  
114 N. Main St.  
(In Sylvan Hotel)  
CHELSEA, MICH.

**DAVID WINANS OPTICIAN**

APPOINTMENTS NOT NECESSARY

## OPEN

For the Season

Though we're late in opening because of remodeling and construction we're happy to be back to serve you

**DELICIOUS FRIED CHICKEN, SHRIMP and OCEAN PERCH DINNERS**

**Individual Chicken Dinners**  
Includes cole slaw, french fries

**BUCKET OF CHICKEN**

DINING ROOM UNDER CONSTRUCTION

**CURB SERVICE and CARRY-OUT SERVICE**  
Six Days a Week, 10 a.m. to 10 p.m. Closed Mondays.

**ROOT BEER BY THE GALLON**

**ALSO: SANDWICH & FOUNTAIN MENU**

**L & R DRIVE-IN**

11485 NORTH TERRITORIAL RD.  
PHONE 426-8668

**Howell Livestock Auction**  
Mason 677-8941  
The Wise Owl Says Ship to Howell  
**SALE EVERY MONDAY, 2 p.m.**  
Phone 546-2470, Bim Frank.

### Market Report for June 13

**CATTLE**  
Good to Choice Steers, \$37 to \$39  
Good-Choice Heifers, \$35 to \$36.50  
Feeder Heifers, \$28 to \$34  
Calf, \$30 and down.

**COWS**  
Heifer Cows, \$29 to \$31  
UL-Commercial, \$28 to \$30  
Canner-Cutter, \$25 to \$28  
Fat Beef Cows, \$24 to \$27

**BULLS**  
Heavy Bologna, \$31 to \$34  
Light & Common, \$30 and down.

**CALVES**  
Prime, \$58 to \$62  
Good-Choice, \$48 to \$53  
Heavy Bologna, \$30 to \$35  
Cull & Med., \$40 to \$50

**FEEDERS**  
300-400 lb. Good to Choice Heifers, \$32 to \$38  
400-700 lb. Good to Choice Steers, \$42 to \$50  
300-500 lb. Holstein Steers, \$38 to \$45  
600-800 lb. Holstein Steers, \$32 to \$38  
Common-Med., \$32 and down.

**SHEEP**  
Wooled Slaughter Lambs:  
Choice-Prime, \$34 to \$36  
Good-Utility, \$31 to \$34  
Slaughter Cows, \$20 to \$32  
Feeder Lambs, all weights, \$30 to \$34

**Shorn Slaughter Lambs:**  
Choice-Prime, \$32 to \$34  
Good-Utility, \$28 to \$32

**HOGS**  
200-230 lb. No. 1, \$27 to \$28.10  
200-240 lb. No. 2, \$26 to \$27  
240 lb. and up, \$24 to \$25  
Light Hogs, \$26.50 and down.

**Sows:**  
Pancy Light, \$22 to \$23  
300-500 lb., \$21 to \$22  
500 lb. and up, \$20 to \$21  
**Boars and Stags:**  
All weights, \$21 to \$22.50  
**Feeder Pigs:**  
Per Head, \$16 to \$24

**HAY**  
1st Cutting, 60c to 80c  
2nd Cutting, 80c to \$1

**STRAW**  
Per Bale, 60c to 85c

**COWS**  
Tested Dairy Cows, \$850 to \$480  
Tested Beef Type Cows, \$250 to \$350

Established 1871 **The Chelsea Standard** Telephone GR 5-8581

Excellence Award By Michigan Press Association  
1951-1952-1960-1964-1965-1966

Walter P. Leonard, Editor and Publisher

Published every Thursday morning at 800 North Main Street, Chelsea, Mich. 48118, and second class postage paid at Chelsea, Mich., under the Act of March 3, 1879.

Subscription Rates (Payable in Advance)  
In Michigan: One Year \$4.00, Six Months \$2.25, Single Copies \$ .15  
Outside Michigan: One Year \$6.00, Six Months \$3.50, Single Copies \$ .20  
Service men or women, anywhere, 1 year \$4.00

**NATIONAL NEWSPAPER**  
Association - Founded 1885  
National Advertising Representative: MICHIGAN NEWSPAPERS, INC., 257 Michigan Ave., East Lansing, Mich. 48823

## Drain Commissioner J. Flook Will Not Seek Re-election

Washtenaw County Drain Commissioner, John H. Flook, has announced that he will not be a candidate for re-election "because of health." Flook is a double amputee.

Flook, who has served as Drain Commissioner since 1954, said: "during the 18 years that I have been Drain Commissioner, I have developed this office into a multi-million dollar operation exceeding all other county departments in work performed, with nearly \$5 million worth of new construction this year, all necessary to the health, property, and well-being of the people of this county and to the maintenance of the ecology."

"In addition, the office currently has an estimated \$20 million worth of drainage work in various stages of engineering... all of which has been formally requested by home owners or municipalities within the county."

"Of all the work done in these years, the most rewarding was the Portage Lake Level project, which culminated in construction of the Portage Lake Dam, which is unique for its size. This is a visible accomplishment. Most of the rest of my work is underground and out of sight."

"I have served as Drain Commissioner longer than anyone else in the history of Washtenaw county and am proud of the work accomplished during that time, especially since administrative cost has consistently been one of the lowest of all county offices. Since 1954, the population of Washtenaw county has doubled, yet the Drain Commission now consists of the exact same number of persons it did then—four—to deal with planning, construction, maintenance and repair, and records, of about 500 miles of county drains."

"I am grateful to the people who have supported me over the years. Now, however, I find that because of health I can no longer keep up the increasing responsibilities of the office, as the Board of Commissioners in recent years has refused to provide the necessary funds and personnel to adequately serve the public."

"I sincerely hope that a qualified person with engineering and construction work experience will be elected to the office of Drain Commissioner."

"I wish my successor good luck."

### Thought For Food

Honor Dad on Father's Day by featuring steak - his favorite food! For father alone, choose a generously cut individual steak, such as club, strip, T-bone, Porterhouse, rib eye or tenderloin (filet mignon). To serve the rest of the family, select similar steaks of appropriate size or choose a thick sirloin or Porterhouse steak and carve into steaks for individual servings.

The dress with the two-piece look is popular this spring. This is accomplished by making the shirtwaist type bodice, one color and the skirt another.

A 1940 style is in again for evening. It is the long dress with the halter neckline, bare back and very full skirt.

Was that new outfit really worth the money?

## EVERGREENS & SHRUBS AT A BARGAIN

Customers are amazed at our beautiful nursery and low prices.

## HEISE'S TREE FARM

North side I-94, Exit 162 at Fletcher Rd.  
2 miles east of Chelsea

**OPEN SATURDAY & SUNDAY ONLY**  
8 a.m. to 12 Noon, DURING JUNE

PHONE 971-2244

## SPRING SALE GERANIUMS-FUSHIAS TUBEROUS BEGONIAS

50¢ ea. — \$5.00 doz.

**VEGETABLE and FLOWERING PLANTS**  
\$3.00 per flat

### HOURS:

Monday thru Friday - 8 a.m. to 7 p.m.  
Saturday & Sunday - 9 a.m. to 5 p.m.  
for your shopping convenience.

All Items Grown in Our Greenhouses.

## CHELSEA GREENHOUSE

MEMBER FTCD — WE TELEGRAPH FLOWERS ANYWHERE  
7010 LINGANE ROAD, CHELSEA

PHONE 475-1157





## Turner in Peace River Valley

(Continued from page one)

ment on the Grea Stone Lake, Canada's Northwest Territory.

Leaving Hay River, Turner took a run to Pine Point, a mining settlement east of Hay River. There he met a family that is interested in his camper. After showing them how it operates, he was invited to their home for a "legal moose supper."

Commenting on his new friends, Mr. and Mrs. Jack Weber and family, Turner says, "One can't beat the hospitality down here in the north. I have made several new acquaintances. One is one of the superintendents of the Lead and Zinc Mine at Pine Point, and lives in a modern home. He has a nice family, of which the youngest, Garry and Nelson, still live at home."

After leaving the Webers, Turner set his sights for Fort Smith, another historical spot of the north. It is 147 miles from Pine Point, and the Webers had told him to stop at the Angus Fire tower, some thirty miles up the road toward Fort Smith. There are no campgrounds marked along the 147-mile route, but the ranger at the Fire Tower did it was OK for Turner to park for the night by his cabin. Turner found Allen Reed, the ranger, to be an "interesting chap." He was formerly from England, but had come to Canada some years back and spent his summers looking for forest fires in the huge expanse of bush country in the north. He was under the supervision of the National Park Service at Wood Buffalo National Park, with headquarters in Fort Smith, which is close to the Alberta provincial border.

Turner found this area to be quite fascinating. He relates, The Slave River that drains to Great Slave Lake was one of the rivers used by Alexander MacKenzie. It was at the large rapids, called Pelican Rapids, that all freight and supplies had to be portaged around in the days of riverboat travel, so it became quite a town sight and was the capital city of Canada's Northwest Territories. This kept up 'til 1967 when it was moved to Yellow Knife, a community of 6,500 people, on the shores of Great Slave Lake. "Its economy comes from mining."

Wood Buffalo National Park straddles the boundary of Alberta and the Northwest Territories, and is the nesting sight of the nearly extinct whooping crane, a large white bird resembling the sandhill crane found near Chelsea, except that they are all white with black markings on their wings and a rusty patch on their head. There are only 38 known left in the state.

Turner mentions, "I was hoping for some pictures of them, but the chief ranger told me that no one was allowed to go closer than three miles of the area, and even aircraft were not allowed to fly lower than 3,000 feet over their nesting areas. They are hoping that the birds will make a come-back in population, but at present it is tough and goes. They were hunted to near extinction for their plumage."

Turner relates how Buffalo Park gets its name. "The park gets its name from the wood buffalo or bison that still roam wild here in this huge wilderness area. They are the last remaining wild herd in North America. There are some 1,200 in the park, and quite a number outside the park, and some hunting is now done each year. I met the only guide and outfitter that is allowed to hunt them, Frank Laviolette, of Fort Smith. I am carrying some of his literature, and if anyone reading this article would like to try hunting them, write to: Frank Laviolette, P.O. Box 163, Fort Smith, Northwest Territories, Canada. He will send you literature."

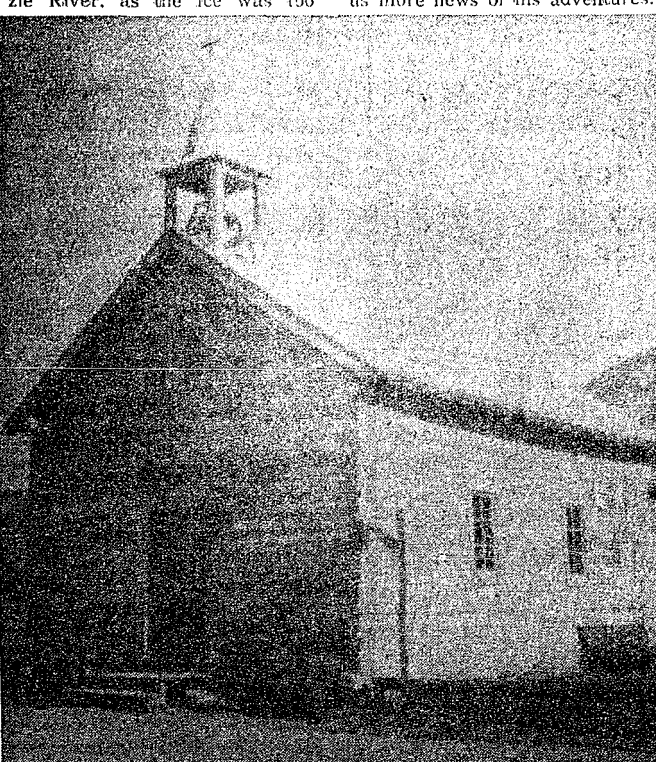
Turner reflects that it must be quite a challenge to hunt wood buffalo, since he has never seen any animal as large as the ones that roam the brushlands up there. He says that they can disappear into the black spruce so quick that one can't imagine how an animal so large can just melt away.

He reports that some of the bulls weigh a ton, and are quite dark. The cows and the calves are more scary than the bulls.

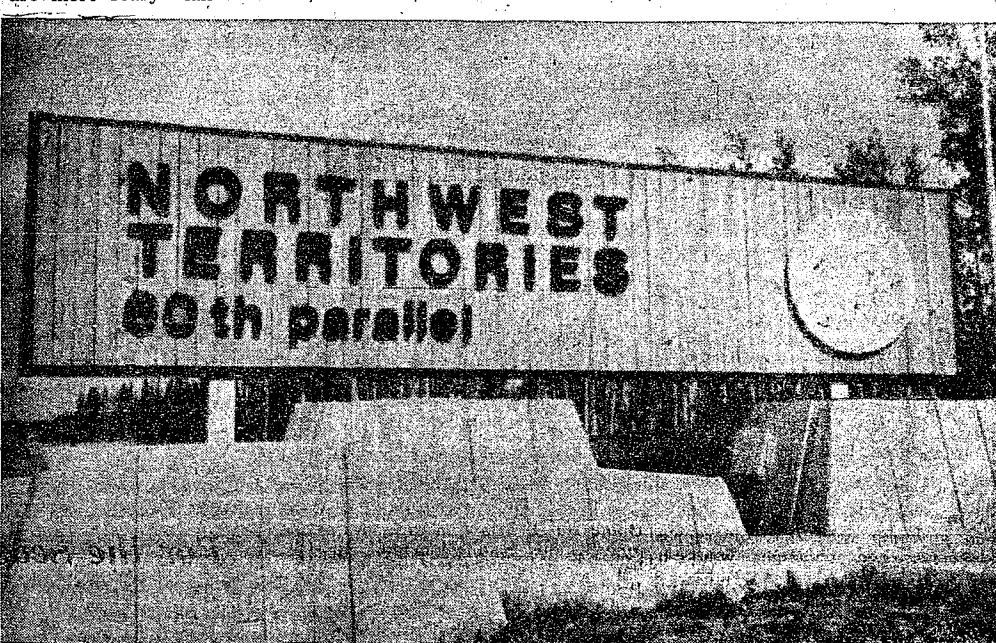
and he relates that he couldn't get any good pictures of them.

When Turner decided to leave Wood Buffalo Park and head for Yellow Knife, he found that he couldn't get across the McKenzie River, as the ice was too

thick for the ferry to cross, and cars and trucks were backed up for a mile. We leave our wandering reporter headed for the Yukon and then on to Alaska, from which he promises to send us more news of his adventures.



LOG CHURCH AT DUNVEGAN MISSION: This picture was taken where the MacKenzie Highway crosses the Peace River. It was near here that Alexander MacKenzie and his men spent the winter of 1792. The next summer, they reached the Pacific Ocean by following the Peace River to its headwaters and then following the rivers flowing to the Pacific.



BORDER MARKER: This is one of the border markers on the MacKenzie Highway that Don Turner has passed on his travel to Alaska.

## LLOYD BRIDGES CHEVROLET

(FORMERLY SPAULDING CHEVROLET)

## USED CAR CLEAN-UP SALE

These cars will be offered for 3 days only at these prices . . . Buy NOW and Save \$

**THURS.-FRI.-SAT., JUNE 15-16-17**

1961 FORD FALCON 2-dr. . . . .	\$68 <sup>00</sup>
1965 PONTIAC CATALINA 2-dr. . . . .	\$340 <sup>00</sup>
1966 CHEVY 9-PASS. WAGON . . . . .	\$333 <sup>00</sup>
1966 CHRYSLER NEWPORT 4-dr. . . . .	\$165 <sup>00</sup>
1960 CHEVY BEL-AIR 4-dr. . . . .	\$52 <sup>00</sup>
1965 PONTIAC LEMANS 2-dr. . . . .	\$219 <sup>00</sup>
1966 CHEVY 3/4 TON PICK-UP . . . . .	\$311 <sup>00</sup>
1966 CHEVY IMPALA CONVERTIBLE . . . . .	\$580 <sup>00</sup>
1960 CHEVY BISCAINE 2-dr. . . . .	\$54 <sup>00</sup>
1964 CHEVY 3/4 TON PICK-UP . . . . .	\$289 <sup>00</sup>

(Rebuilt Motor)

Liquor Dept.  
Beer and Wine  
Fresh Meats  
Fresh Produce  
Frozen Foods  
Frozen Seafoods  
Fresh Bakery  
Super Market  
Groceries  
Gallon Fruits,  
Vegetables  
Deli Case  
Bulk Cheese  
Diet Foods  
Baby Food  
Infant Cares  
Custom  
Meat Processing

## STOP & SHOP At Your JIFFY MARKET

Big Enough To Serve You . . . Small Enough To Know You!  
**COMPLETE SUPER MARKET - PHONE 475-5701**  
Corner Sibley & Werkner Rds. Chelsea, Mich.

OPEN 7 DAYS A WEEK . . . STORE HOURS: 7 a.m. to 10 p.m.  
Open Long Hours for Your Shopping Convenience.

Chelsea's Home-Owned and Operated Old Fashion Store That Is Ready and Willing To Serve the Good People of Chelsea.

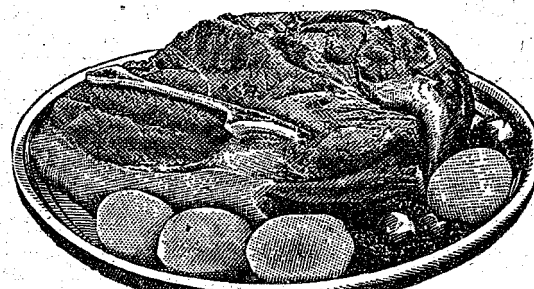
SALE PRICES EFFECTIVE THURSDAY, JUNE 15, THRU SUNDAY, JUNE 18.

Stereo Tapes  
and Records  
Magazines  
Paperbacks  
Health, Beauty  
Aids  
Housewares  
Pet Foods  
and Supplies  
Toy Dept.  
Greeting Cards  
Sewing Needs  
Gift Shop  
Water Softener  
Salts  
Garden Seeds  
25-Lb.  
Dog Foods  
Gas Pumps

## BEEF CHUCK ROAST

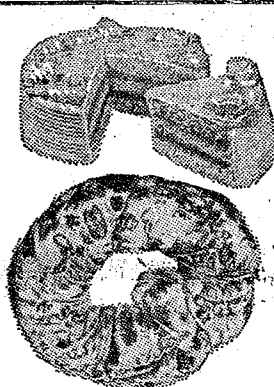
U.S.D.A. GRADE CHOICE

BLADE CUT . . . . .	59¢ lb.
CENTER CUT . . . . .	69¢ lb.
ROUND CUT . . . . .	89¢ lb.
ENGLISH CUT . . . . .	89¢ lb.



Tender Beef with Flavor!

ECKRICH SMOKEE'S SAUSAGE 99¢ lb.	YOUNG, TENDER BEEF LIVER 59¢ lb.	HYGRADE'S BALL PARK ALL - MEAT FRANKS 79¢ lb.	ECKRICH SMOK-Y-LINKS SAUSAGE 10-Oz. Pkg. 79¢	WHOLE PORK BUTTS 4 to 8 Lbs. 59¢ lb.
---	---	--	---	---



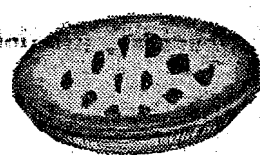
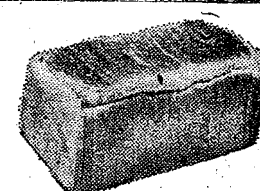
## JIFFY MARKET FRESH BAKERY

Pies - Cakes - Rolls - Cookies  
Bread - Cup Cakes - Donuts - Others

Old German Pretzels Saturday Afternoons.

## SWEET BREAKFAST ROLLS - 10¢ ea.

FRESH MERCHANDISE ARRIVES 11 A.M. EACH MORNING



CRISCO SHORTENING . . . . .	3-Lb. Can	79¢
EGGS, Shamrock Medium . . . . .	1 Doz. Crtn.	29¢
FLOUR, GOLD MEDAL . . . . .	5-Lb. Bag	39¢
Milk, Risdon's Homogenized . . . . .	1 Gal. Crtn.	85¢
COCA-COLA . . . . .	12-Oz. Cans 6 pac	69¢
MIRACLE WHIP . . . . .	1 Qt. Jar	49¢
BUTTER, MICHIGAN . . . . .	1-Lb. Print	69¢
BREAD, Kleen-Maid . . . . .	A Popular Favorite 1 1/4-Lb. Loaf	18¢
COFFEE, Maxwell House . . . . .	1-Lb. Can	79¢

JIFFY MARKET

## MARATHON DISCOUNT GAS PUMPS

Finest Top Quality Gas at Low Discount Prices!



We appreciate your business!

MARATHON REGULAR GAS	33.9 gal. Includes All Taxes
MARATHON PREMIUM GAS	37.9 gal. Includes All Taxes

KLEER - VIEW WINDSHIELD WASHER SOLVENT	59¢ gal.
---	----------



Ads  
Taken  
Till 5 p.m.  
Tuesday

# IT'S EASY TO BUY-SELL-RENT- HIRE & FIND WITH

# WANT ADS

Just  
Call  
GR 5-3581

## WANT ADS

### The Chelsea Standard

#### WANT AD RATES

PAID IN ADVANCE—All regular advertisements, 50 cents for 25 words or less, each insertion. Count each figure as a word. For more than 25 words add 2 cents per word for each insertion. "Blind" ads or box number ads, 50 cents extra per insertion. CHARGE RATES—Same as cash in advance, with 15 cents bookkeeping charge if not paid before 5 p.m. Tuesday preceding publication. Pay in advance, send cash or stamps and save 15 cents. DISPLAY WANT ADS—Rate, \$1.10 per column inch, single column width only, 5-point and 14-point light type only. No borders or headlines. Minimum 1 inch. CARDS OF THANKS or MEMORIALS—Single paragraph style, \$1.00 per insertion for 50 words or less; 2 cents per word beyond 50 words. COPY DEADLINE—5 p.m. Tuesday week of publication.

## KNAPP SHOES

For Cushion Comfort  
Robert Robbins  
475-7282

## FORMAL WEAR

RENTAL SERVICE  
Proms - Weddings - Special Events  
6 different colors.

## Foster's Men's Wear

## REAL ESTATE

4-ROOM Cedar Lake cottage. Excellent waterfront lot, \$16,000. Good terms.

## R. D. MILLER REAL ESTATE

Real Estate Broker  
475-7311  
15775 Cavanaugh Lake Rd.  
Chelsea, Mich.

## Seamless Aluminum Gutters

White, brown, black or green.  
WILSON METAL SHOP  
428-8468, Manchester

## STILL AVAILABLE

Funk's G Seed Corn  
All varieties and grades  
on hand

## Harold Trinkle & Sons

Ph. 475-8992  
FOR SALE—Pure-bred German short hair pointers. Bargain puppy prices if you live in the country and want a pet as well as a hunter. Ph. 475-7525 week-ends or after 5 p.m.

## Gem Travel Trailers and Campers

PICK UP COVERS  
4' ————— \$100.00  
26' ————— \$179.00 and up

## Triangle Sales

Chelsea 475-4502

## WANT ADS

1969 MERCURY Cougar XR-7. Red with black interior, black vinyl top, air conditioning. \$2295. Open Sat. 8:30 a.m. to 5 p.m. Mon., Tues. and Thurs. 8:30 a.m. to 9 p.m. Wed. and Fri. 8:30 a.m. to 6 p.m. Devon Lincoln-Mercury, 2100 W. Stadium, Ann Arbor. Phone 662-5555. 45tf

## Pine Haven Saddlery

4534 Dexter Townhall Rd.  
Phone Dexter 426-4268  
Complete line of English and Western equipment. 10% discount to all 4-H Club members.  
Store Hours: Mon.-Sat., 9-9  
Sunday, 10-9

## ANTIQUES MARKET

Ann Arbor, Sunday June 18, 10 a.m. to 5 p.m. Antiques only. Lots of furniture, cupboards, pie safes, chairs, early tools, American coin silver, choice American Indian stone artifacts, Early New England 18th Century tin and tole ware, Burma Shave sign, Howard pocket watches, red satin lamp, 11 a.m. to 5 p.m. 45tf

## ARMSTRONG OUTDOOR CARPETING

6-ft. wide, in red, green and blue. \$1.99 per sq. yd. Merkel Bros., Chelsea. Ph. 475-8621. 45tf

## CLOGGED SEWER

Reynolds Sewer Service  
We Clean Sewers Without Digging  
Drains Cleaned Electrically  
FREE ESTIMATES  
2-YEAR GUARANTEE  
Phone Ann Arbor NO 2-5277  
"Sewer Cleaning Is Our Business—Not a Side Line"

## Special of the Week

1970 Cutlass Supreme 2-dr. Vinyl top. (Air cond.) \$2795

## USED CARS

1970 Buick Skylark 2-dr. hardtop. Vinyl top. \$2295

1970 Chev Malibu 2-dr. hardtop. Vinyl top, p.s., p.b., clean. \$2295

1969 Dodge Monaco 4-dr. Brougham, full power (air cond.) \$1895

1969 Chevelle Malibu 2-dr. hardtop, p.s., auto. trans. Clean. \$1795

1968 Chev Caprice 2-dr. hardtop, clean. \$1395

1967 Skylark Custom convertible. Air cond. \$1195

1967 Chevelle station wagon. Automatic, p.s. \$995

1967 Pontiac Catalina Sta. Wagon (air cond.) \$995

1967 Pontiac Tempest station wagon. \$795

1966 Buick Special 4-dr. sedan. \$595

1965 Chevrolet Impala 2-dr. hardtop. \$495

1963 Ford Galaxie 500 4-dr. One owner. Clean. \$495

1962 Volkswagen. Sunroof. \$295

1968 Olds 88 2-dr. hardtop. \$95

## SPRAGUE Buick-Olds-Opel, Inc.

1500 S. Main St., Chelsea  
Phone 475-8664

## WANT ADS

HAMMOND ORGAN teachers wanted to teach in their own homes. Call Grinnell Brothers, Ann Arbor. 662-6667. 34tf

CALL FRANK for all your carpet cleaning jobs, morning or weekend. Needs only 3 hours to dry. Only 10c per square foot. Phone now for free estimate, 761-4328. All work guaranteed. 33tf

PIANO TUNING, Chelsea and area. Facilities for reconditioning and rebuilding. Used piano sales; reconditioned grands and verticals. E. Eklund, 426-4429. x50tf

## Contractor Servicing

Chelsea, Dexter and Manchester Areas  
Complete Home Remodeling  
Inside and Outside

Specializing in extra living space, recreation rooms, kitchens and paneling. Installing all aluminum products, 5" eavestroughs, custom-made awnings, windows and doors, aluminum siding in many selected colors and styles.

Please Call

DALE COOK  
Chelsea 475-8863

## NOW

Full Time  
Complete  
Body Shop  
Service

Stop in For An Estimate

PALMER FORD  
222 S. Main St.  
475-3271

FOR REAL DOLLAR SAVINGS be sure and see us before you buy any new or used car. Palmer Motor Sales, Inc. Your Ford Dealer for over 50 years. 2tf

## G. G. HOPPER

Building Contractors  
Phone GR 5-5581  
Gregory 498-2148

## Professional Siding Application Service

Specializing in Solid VINYL Siding and solid VINYL Trim  
We have all the special equipment necessary for on the job professional fabrication and application of the perfect SIDING and TRIM—SOLID VINYL. SIDING VINYL is as efficient as wood, 238 times more efficient than steel, 1,080 times more efficient than aluminum.

Call or Write

D. Edwards & Sons  
5450 Conway Rd., Chelsea  
Phone 475-2014  
FREE ESTIMATES

FOR SALE—Mopar parts: 8.23 ring and pinion for small rear-end, \$20; Stewart-Warner tachometer, \$16; 2 heavy-duty Monroe shocks for rear, \$20; Hi-Rise Edelbrock for 273 Mopar, \$35; 600 cfm Holley 4-barrel with manual secondaries, \$30; also, TRW 1/2 race cam with lifters for small-block Mopar, \$35. Phone 663-8228. x48tf

## Low Low

Down Payment

On New

GOLD KEY

MORTGAGES

For information ask your Realtor or call 663-7555.

Ann Arbor Federal

Savings

Equal Housing Lender

FOR SALE—'66 Mercury Monterey, 4-door extra good. Also one large Shetland pony. Ph. (517) 522-4465. x52

## YARD GOODS

The Selection

Is Good.

BASEMENT

DANCER'S

HELP WANTED—Secretary, good typist. Shorthand needed. \$500-\$575 mo. Ph. 761-8252. x52



in the Standard Want Ads — and gained 18 pounds?"

"Guess who learned how to open the refrigerator we got"

## WANT ADS

DIAMOND ROOFING, reroofing and repairing. Roof louvers installed. Gutters cleaned. Licensed roofer. Call 475-1129. 45tf

## A fine selection of

New and Used Cars

for immediate delivery

Harper Pontiac

Sales & Service

475-5311

Evenings, 761-2999

10tf

## 2-CYCO FUEL

For All 2-Cycle Engines

WHITE GAS

Available at

Gateway

Sports Centre, Inc.

45tf

XEROX COPIES made. Merkel

Brothers. 41tf

ROBERT A. ALDER, licensed

contractor. Residential building,

remodeling. No job too small.

18200 Boyce Rd., Gregory, Mich.

48137. Phone 498-2539. -47tf

## FOR SALE

TO CLOSE ESTATE—4-bedroom,

2-baths, plus basement.

2-FAMILY APT.—5 rooms and

bath, each. Large basement.

See or call

Kern Real Estate

616 S. Main, Chelsea

or phone 475-8563

-52tf

## Tupperware Picnic

Sponsored by

Spaulding for Children

at the farm

3660 Waltrous Rd., Chelsea

Wednesday, June 21

from 12 to 4 p.m.

Pot-luck picnic at 12.

Tupperware party after lunch.

Bring the entire family and a

dish to share for lunch.

52

## Time for a Change...

... from old, worn

down tires to SAFE

new ones! Come in

today!

Your tires have been taking a real

beating... How much longer can

they stand up? Better to be safe than

sorry! Trade them in on a new set.

UNION 76 OIL PRODUCTS

Jim's Union 76 Service

Tires — Batteries — Tune-Ups — Brake Service — Wheel Alignment

PHONE 475-2822

501 SOUTH MAIN

51

## WANT ADS

1971 FORD MAVERICK 2-dr., 6-cyl., automatic, 19,000 miles. Open Sat. 8:30 a.m. to 5 p.m. Mon., Tues. and Thurs. 8:30 a.m. to 9 p.m. Wed. and Fri. 8:30 a.m. to 6 p.m. Devon Lincoln-Mercury, 2100 W. Stadium, Ann Arbor. Phone 662-5555 45tf

## Hearthside Yarn Shop

5450 Conway Road

Yarns, needles, accessories

Free instructions in knitting and

crocheting with follow-up assist-

ance.

Orders taken for hand-made items.

Ph. 475-2014

86tf

CAR RENTAL by the day, week,

month, or longer. Full insur-

ance coverage, low rates. Call Lyle

Christwell at Palmer Motor Sales,

GR 5-3271. 25tf

## HELP WANTED—

Placements Unlimited

Ann Arbor's newest employment

agency, has openings for mature

secretaries with good skills and

keypunch operators with certifi-

cates. Call for additional informa-

tion, 973-0550. x49tf

ROCKING M RANCH—Morgans

and Arabians. Stud service.

Stock for sale. Phone 428-8110, 8080

North Territorial Rd., Dexter. x3

BODY SHOP MAN needed. Expe-

rienced, to take complete charge

of body shop. Must be capable of

writing own estimates. See Tom

Stock at Village Motor Sales, 1185

Manchester Rd., Chelsea. x49tf

## CLARENCE WOOD REAL ESTATE

LARGE (2,300 sq. ft.) NEW (1 1/2

yr. old) COUNTRY HOME—3

large bedrooms, 3 baths, living

room and dining room have cathe-

dral ceiling. Kitchen has range,

dishwasher and disposal. Family

dinette. Den with fireplace. Cen-

tral air conditioning. See it. You

will like it.

BRICK COLONIAL—4 bedrooms,

3 baths, family room with brick

fireplace, finished rec. room. Spot-

less.

SMALL 1-BEDROOM—Has large

lot with trees. Ideal for a couple.

Village water and sewer. \$17,000.

CLARENCE WOOD

BROKER

Efficient PERSONAL Service

646 Flanders St., Chelsea

Phone 475-2033 or 475-8217

52tf

FOR RENT—Duplex, 2 bedroom,

carpeted, stove and refrigerator,

full basement. Chelsea area. No

children or pets. \$200. Shown by

appointment only to people over 30.

Call 426-3737. x51tf

PATCHING and PLASTERING.

Call 475-7489. 33tf

## WANT ADS

CAR & TRUCK LEASING. For details, see Lyle Christwell at Palmer Motor Sales, GR 5-3271. 49tf

NOW TAKING ORDERS for fresh strawberries. Direct from western Michigan. Cleaned and ready to eat or freeze. Orders must be in by June 17. Ph. 428-5031. Manchester Locker Plant. x52

WANTED TO RENT—3-bedroom home in Chelsea or within 20-mile radius. Call collect 1-482-8237 after 5 p.m. x52

## CHELSEA

COUNTRY LIVING—1,800 sq. ft., beautiful ranch, 2 1/2 baths, family room, dining room, 2 fireplaces, located on 10 acres. Excellent view, 3 miles from Chelsea. Priced to sell at \$60,000.

12 ACRES—1,850 sq. ft. all brick modern ranch home, located on blacktop. Dining room, family room, fireplace, 2-car attached garage. Excellent condition and decoration.

CHELSEA—3-bedroom, family room, dining room. Close to elementary school. Priced for fast sale.

1 1/2 ACRES—Located between Chelsea and Dexter. Quality brick ranch home, 2 fireplaces, 2-car attached garage, walk-out basement. Excellent buy at \$48,500.

FARMS—240 acres, 4-bedroom farm home, good barns, excellent soil. Located between Chelsea and Manchester.

158 ACRES—Beautiful renovated Early American home. Excellent barns. Located between Ann Arbor and Manchester.

213 ACRES—1,000 feet from the east side of the Village of Chelsea. This land is ideally situated for future development.



## All Insurance Needs

the convenience of your own home — or mine

H. H. Miles, Allstate  
Call GR 5-8334 after 6 p.m.

RENT—Fair Services Center for meetings, parties, wedding receptions, etc. Weekdays or weekends. Contact John Wellnitz, phone 4431.

ONE WORK—Fireplace and masonry. For estimates call 475-0100.

RESE FOR SALE—Golden Palomino 9-yr-old mare, 16 hands. Ph. 475-2898 or 475-8912. x52

FOR SALE—Aluminum dock support assemblies end the annual agony of dock installation and they're always 10% off for cash at Chelsea Lumber! x52

Headquarters for  
**RED WING  
WORK SHOES**  
Foster's Men's Wear

ST. MARY'S Rummage Sale. Friday and Saturday, June 16 and 17, at St. Mary's school hall. Friday 9 a.m. to 6 p.m., Saturday 9 a.m. to 12 noon. x52

FOR SALE—Pick-up camper, 10'x8'. Sleeps 4. Call after 5 p.m. x52

Live in  
the community  
that compliments  
your way of  
living:

W.C. BEST HOMES  
SPRING  
SHOW OF  
VALUES



**CHELSEA**  
**'23,500**

On your lot or select one of ours.  
Ready to move into—Includes the following:

- ★ Fully Carpeted
- ★ Range, Refrigerator
- ★ Full Basement
- ★ Well and Septic
- ★ Maintenance Free Exterior
- ★ 1 Bath
- ★ 2-Car Garage
- ★ Complete with storms & screens

Best Homes are just perfect for a growing family. They're the cream of the crop. Real, old-fashioned craftsmanship. Quality features. Everything you could ask for in a home. The living's great in a Best home.

Appointments  
At Your Convenience  
Office Hours: 9-5  
12290 Jackson Rd.,  
Chelsea

Office, Brighton and Chelsea - Phone 475-2828  
Blue Ribbon Homes Featuring Real Old-Fashioned Craftsmanship

**W.C. WEBER CONSTRUCTION CO.**

"Chelsea's Premier Builder"

R & H TREE EXPERT—Trimming, cabling, nailing, take downs. Fully insured. Free estimates. 475-3541. x52

1968 CHEV NOVA 2-dr. 6-cyl., auto. \$1195. Devon Lincoln-Mercury, 2100 W. Stadium, Ann Arbor. Ph. 662-5555. x52

FOR SALE—Thoroughbred German Shepherd puppies. Phone 426-4905. x52

REDUCE EXCESS FLUIDS with Fluidex \$1.69—Lose weight safely with Dex-A-Diet, \$1.98 at Chelsea Drug. x12

1965 CHEVROLET—2-ton dump truck. Real good condition. Open Sat. 8:30 a.m. to 5 p.m. Mon., Tues. and Thurs. 8:30 a.m. to 9 p.m. Wed. and Fri. 8:30 a.m. to 6 p.m. Devon Lincoln-Mercury, 2100 W. Stadium, Ann Arbor. Phone 662-5555. x52

1969 FORD Galaxie 2-dr. hardtop, V-8, automatic, p.p.b. \$1295. Open Sat. 8:30 a.m. to 5 p.m. Mon., Tues. and Thurs. 8:30 a.m. to 9 p.m. Wed. and Fri. 8:30 a.m. to 6 p.m. Devon Lincoln-Mercury, 2100 W. Stadium, Ann Arbor. Phone 662-5555. x52

"KITCHEN ALLEY" is 5' helpful new display kitchens of quality cabinets in every price range. See it now, at Chelsea Lumber. x52

## Quality Evergreens

Spreading and Hicks Yew, Pyramid and Globe Arborvitae, Pines, Birch Clumps, Mountain Ash, Flowering Crab, Norway Spruce, King Maples. You dig your own.

All State Inspected  
Free Estimates

Faist's  
Evergreen Nursery  
11362 Trist Rd., Grass Lake  
Ph. (617) 522-4588

ST. MARY'S Rummage Sale. Friday and Saturday, June 16 and 17, at St. Mary's school hall. Friday 9 a.m. to 6 p.m., Saturday 9 a.m. to 12 noon. x52

ARE YOU TIRED of factories and construction work? We will employ 2 go-getters who want a solid future. Interesting work and with opportunity of \$150 to \$175 per week with rapid advancement. Experience not required, but must be ambitious and able to get along with people. Phone Personnel Manager, 665-2226, after 10 a.m. Equal Opportunity Employer. x52

HOME FOR SALE by owner in Chelsea—3-bedroom, 1½ baths, fully carpeted. Terms available. (517) 851-3492. x52

FOR SALE—Electric milk separator. \$10. Ph. 761-8732. x52

REPAIR SERVICE for household refrigerators, freezers and garbage disposers. Call Bill, 426-8314. x3

FOR SALE—'63 Chevy Bel-Air, V-8, post-traction, stock, \$100. Ph. Manchester, 428-7280. x52

ROBERT PATRICK for home improvement, building and maintenance. Ph. 428-8501. x52

WANTED—2-bedroom downstairs flat or 2-bedroom house. Will accept 3 bedrooms. Call 973-0873 or 475-1286. x52

## HOWELL TOWN AND COUNTRY

CAMBRIDGE MOBILE HOME on ¼ acre. Furnished with washer, dryer, dishes, carpeting. Country atmosphere. Black top road. Immediate occupancy. MHS 10083.

240 ACRES near I-96 expressway, 7/10 mile road frontage. Branch of Cedar River across property. Land contract available. LF 9819.

20 ACRES level land, older farm house and barn in need of repairs, near Fowlerville. SF 10018.

45 ACRES gently rolling, nice woods. Backs up to State land. 2-story remodeled farm house with three bedrooms. Also one smaller home rented. Call to hear more about this nice farm. SF 9786.

WOODS and rolling lots, access to Half Moon Lake in area of good homes. Noah to Parkway. VL 9895.

VACANT LOT on Huron River with privileges to Buck Lake near Pinckney. Hiawatha Dr. to Field Rd. \$4,000. VLP 9885.

IN VILLAGE OF HAMBURG—2 bedroom, possible 3 with nice lot, trees, garage. Near school. OC 9993.

35 VACANT ACRES near Chelsea. Rolling, wooded. Land contract available.

WE HAVE vacant parcels of land, 2, 5, 10, and 20 acres near Gregory and Stockbridge. Land contract available for qualified buyers.

## HOWELL TOWN AND COUNTRY

117 E. Main, Pinckney  
Days 878-3177  
Evenings 426-3758

CARLE WIEDMAN  
Local Representative

FENCE—Chain link or redwood fence, all sizes. Material sold for your installation or we will install it. Call 475-8184 or (517) 522-4337 for free estimate. x52

PROFESSIONAL CARPET cleaning service expanding to Washtenaw county. All sizes and types of carpets cleaned, day or night. Call 428-7288 or (517) 522-4337 for free estimate. x52

GARAGE SALE—9 a.m. to 6 p.m. Friday and Saturday, June 16 and 17. 3001 Inverness, Dexter. x52

FOR SALE—Solid vinyl and linoleum. Also tile, Armstrong and Congoleum. Nairn. Installed by skilled craftsmen. Estimates, terms, Merkel Bros. 475-8621. x52

DUPLICATOR—Model 80. \$100. Polyester shag carpet, yellow-gold, 9'6" x 14'. \$50. Ph. 426-8383. x4814

FOR SALE—Baler twine, \$6.25 per bale. Carl Heller. Ph. 475-8304. x52

WEDDINGS, ANNIVERSARIES, or any occasion. We can furnish the printing. Call John's Shop evenings and weekends. 475-7500. x52

WANTED—2-bedroom unfurnished home with yard to rent east of Chelsea for three years, beginning August. At least one bedroom with bath on ground level. Married couple, graduate students, with pets. \$100-\$125 mo. Ph. 769-6381. x52

## SOMETHING NEW

We now have special trained crews for

ALL TYPES

of

SIDING

and

ROOFING

"GET OUR FREE ESTIMATE"

PHONE 475-2683

LaFontaine  
Construction  
& Development Corp.  
LICENSED BUILDERS  
Chelsea

FOR SALE—'59 Corvette. \$50. 4-speed. Ph. 475-2614. x52

HELP WANTED—Female, cashier. Call 475-2898. x52

FOR SALE—'69 12'x50' Champion mobile home. Ph. 475-7360. x1

## MARSHALL

REALTY  
(813) 878-3182

440 Dexter Rd., Pinckney

COUNTRY LIVING on 2 acres, a nice 2-bedroom home with 220 ft. road frontage, large garage, priced right. Chelsea schools.

DEXTER AREA—All-electric duplex with easement to beautiful Silver Lake, good combination of income with living quarters. Priced to sell.

DEXTER AREA—Neat 2-bedroom insulated cottage in good condition on large double lot, completely furnished. Two lake accesses. Priced for quick sale.

DOUBLE LAKE LOT—Beautifully landscaped, with seawall, on Patterson Lake.

SMALL FARM—5-bedroom home on 6 acres with good barn and other outbuildings. Chelsea schools.

DEXTER AREA—A beautiful 6-bedroom home with fireplace, 2½ baths, inter-com system, 2-car attached garage, loaded with extras, plus large barn, greenhouse and other outbuildings on 118 acres with lake and ponds.

6 BEAUTIFUL ROLLING ACRES, close to M-52 and State Land. Chelsea schools. Cash or land contract.

OTHER IDEAL BUILDING SITES on 5, 10 acres or more in Chelsea, Dexter, Gregory or Pinckney areas.

WE WELCOME NEW LISTINGS  
CALL US FOR PROMPT SERVICE  
Evelyn 475-8583 - Dave 475-7275  
JoAnn 475-7493 x52

GARAGE SALE—20-inch 3-speed and 28-inch boy's bikes, 6-foot aluminum roll-up awning, 1½-ton auto service jack, slot car and HO train sets, clothing, toys, misc. items, some antiques, Thursday thru Sat. 221 E. Middle, Ph. 475-7087. x52

GARAGE SALE—Bedroom suite, chairs, dishes, and electric start 7 h.p. riding mower with trailer and snowblade, never been used. Friday and Saturday, June 16 and 17. 235 Buchanan. x52

FOR SALE—AKC male Toy Poodle, loves kids, 6 months old. Ph. 475-8852. x52

FOR SALE—1967 Ford station wagon, 6-cylinder, automatic transmission. Good running condition. \$275. Ph. 475-2188. x52

FOR SALE—1966 International 1600 Load Star stake truck. \$1,600. 1970 350 Honda. 5,600 mi. \$800. Ph. 475-8097. x52

FARMS

9680 US-12—5-bedroom home; 3-car garage; 67 acres; Salina School District. Evenings call Ellis Pratt, 428-8562.

2210 STRUTHERS RD.—5 bedrooms; 2 baths; Grass Lake School District; 384 acres. Evenings call Bob Merchant, 429-9641.

## Owners Attention

We have just completed arrangements for facilities for a major corporation moving into the area. We need housing for 175 employees by Sept. 1st. This firm's employees are prospects for your home!

Call us to list your house today—

## SPEAR AND ASSOCIATES

REALTORS

1936 Pauline Blvd.  
769-8750

x52

Winfrey, Inc.  
1-517-784-8581  
1-517-784-1416 anytime. x52

YARD SALE—June 17-18 (20-year collection), 1936 Model B John Deere, 110' win and garden tractor, Worthington tractor with sickle bar, '64 VW dunebuggy. Lots of tool boxes and benches, spray guns. 1770 Lima Center Rd. 475-2658. x52

SIX FAMILY YARD SALE—0 a.m. to 7 Thursday, Friday, Saturday, June 16, 17, and 18. 4084 Patterson Lake Rd., in Hell across from the restaurant. x52

HELP WANTED—Bookkeeper, through trial balance, \$150 week. Ph. 761-6252. x52

FOR RENT—Small, 2-bedroom unfurnished home at Portage Lake. Will accept one child, no pets. Ph. 426-8758. x52

## THORNTON

475-8628

HORSE FARM—5 acres, farm type 5-room house. New barn with water and electricity, fenced corral, new 3-car garage. \$29,000.

JUST LISTED—Older Colonial, close to shopping and elementary school. 4 bedrooms, dining room, 2-car attached garage. \$28,900.

LANEWOOD—4 bedroom, tri-level, fully carpeted, very very sharp, within village; excellent location. \$39,500.

RETIRES—2-bedroom ranch, 5-family room, 2-car garage. A sharp home on one acre. \$28,500.

DEXTER—3-bedroom, family room, on quiet court. \$31,900.

3 BEDROOM—1½ baths. Close to high school, Chelsea. \$28,500.

NEAR MAIN STREET—3 or possible 4 bedrooms, 2 baths. Sharp. \$35,000.

HILLTOP RANCH—Situated on 1½ acres with access to excellent beach at Half Moon Lake, fully carpeted, fireplace, four bedrooms and study. Even a corral for a pony. \$47,500.

FRONTING ON GOLF COURSE—This all-brick ranch home enjoys the golf course on the east and the sunsets in the west; 3 bedrooms, 2½ baths, fireplace, fully carpeted. A beauty. \$57,900.

2 WOODED ACRES—4 bedrooms, study, 2 fireplaces, and 2 full and 2 half baths. Lots of room is enjoyed in this tri-level with a magnificent view of North Lake. \$59,000.

ALL BRICK—Wooded lot enjoying 180's of open space around it; 4 bedrooms, formal dining room, fully carpeted and access to a beautiful beach at North Lake. \$57,500.

## THORNTON

Realtor - 475-8628

John Pierson 475-2064

Bob Klemm-Schneider 475-4121

Melen Klemm-Schneider 475-4121

Bob Thornton 475-8857

FOR SALE—1971 Torino Squire wagon. Factory air, many extras. New tires. \$3,100. Ph. 475-8024. x52

YARD SALE—June 15-16-17 from 9 to 9. Misc. household, antique sewing machine, used plumbing fixtures, 275 gal. tank, walnut logs and tires, 14,400 Island Lk. Rd., 300 ft. off Stofer Rd. x52

FOR SALE—3 young steers Ph. 475-7617. x52

MOVING—Like new Lane bed room, set, ironing mangle, two green crushed velvet decorator chairs, Maytag washer and dryer, 428-8483. x52

STRAWBERRIES FOR SALE Picked or you pick. 8 a.m. to 8 p.m. Paul Elder, 8115 North Territorial. 426-3255. Ph. 475-8024. x52

FOR SALE—Rustic cottage at North Lake. Call 475-7978 or 475-2098. x52

FOR SALE By Owner—Immaculate 3-bedroom, 1½ baths, drapes and carpet throughout. Basement with shower. Fenced yard with shade trees, garage. 475-8834 after 5 p.m., anytime week-ends. -1

SAND, GRAVEL, FILL, top soil, landscape grading. Ph. 475-2210 between 1 and 3 p.m. and 6-9 p.m. x4

FOR SALE—Kenmore electric dryer, like new. Mersman and tables, sconces, etc. Ph. 475-7195. x52

RUMMAGE SALE—North Lake United Methodist church, Friday and Saturday, June 23-24. 9 a.m. to 4 p.m. Sale Saturday, 10 a.m. to 1 p.m. x52

LATEST 1972 PRICE GUIDE for antiques and collectibles. 100 pages, profusely illustrated. \$1 postpaid. Lockwood's Antiques, Dundee, Mich. 48131. x52

'69 DODGE CHARGER RT, 440 cu. in., automatic. Call 426-4836 between 6 and 9 p.m. x52

FOR RENT—Roomy cottage on North Lake. By the week or month. Call 475-7978 or 475-2096. x52

WANTED—Man to help slaughter and some meat cutting. Part-time. Manchester Locker Plant, 391 Morgan St., Manchester. Phone 428-5031. x1

FOR SALE—Exercise bike, exercise belt, like new, \$50. 475-8068. x1

FOR SALE—71 Ford truck, good condition. Ph. 475-8750. x52

REFRIGERATOR FOR SALE—7936 5th St., Dexter. 426-8314. x52

TRENCHING—4" to 16" wide, 0' to 6' depth, footings, drain lines, water and electrical lines. Will install. Ph. 475-7611. x3

## W

NEAR I-94, 3-bedroom ranch. Lake view, formal dining, family room, fourth bedroom possible. Basement with possible rec. room. Hot water heat, attached garage. Full price \$28,900.

Winfrey, Inc.  
1-517-784-8581  
1-517-784-1416 anytime. x52

YARD SALE—June 17-18 (20-year collection), 1936 Model B John Deere, 110' win and garden tractor, Worthington tractor with sickle bar, '64 VW dunebuggy. Lots of tool boxes and benches, spray guns. 1770 Lima Center Rd. 475-2658. x52

SIX FAMILY YARD SALE—0 a.m. to 7 Thursday, Friday, Saturday, June 16, 17, and 18. 4084 Patterson Lake Rd., in Hell across from the restaurant. x52

HELP WANTED—Bookkeeper, through trial balance, \$150 week. Ph. 761-6252. x52

## WANT ADS

FOR SALE—One 12'x15' canvas tarp, \$18. One heavy-duty trailer, \$50. Ph. 475-2509. x52

FOR RENT—Cottages and campsites on private secluded lake. By the week, month or season. Dexter area. Fishing and swimming. Ph. 426-3241 or 1-538-9296 (Detroit) if no answer. x2

ST. MARY'S Rummage Sale. Friday and Saturday, June 16 and 17, at St. Mary's school hall. Friday 9 a.m. to 6 p.m., Saturday 9 a.m. to 12 noon. x52

FOR SALE—50 bales of hay, 65¢ per bale. Also, Shetland pony, \$15. 475-4792. x52

DO YOU WANT to carpet your recreation room or kitchen? I have just the carpet for that job. A commercial grade in a green and brown tweed, \$3 per yard. Stop in Saturday, and look over this bargain. 353 Washington St. x52

FOR SALE—1968 Honda S90. Excellent condition. Call 475-8212. x52

WANTED TO BUY, a residential building site. 475-8651, ext. 217. x52

BABYSITTING WANTED in my home. Have references. Age 3 and up. 475-2943. x52

## WANT ADS

ST. MARY'S Rummage Sale. Friday and Saturday, June 16 and 17, at St. Mary's school hall. Friday 9 a.m. to 6 p.m., Saturday 9 a.m. to 12 noon. x52

LIGHT BULLDOZING done. Call 475-2210 between 6 and 9 p.m. -1

GARAGE SALE—210 Washington, every day. x52

WILL BABYSIT in my home for pre-schoolers. Ph. 475-4904. x1

HANDICAPPED LADY would like someone to take her to town and places, about twice a week. Interested, come to 20154 Old US-12, the house in back. -1

FOR SALE—Horse for experienced rider. Ph. 475-8437 after 6 p.m. x52

FOR SALE—1968 Buick Skylark 4-dr. Michelin tires, p.s., air conditioning. \$1150. Ph. 475-1244. x52

PROFESSIONAL PAINTING—Interior and exterior. References available. For free estimates call 761-7493. -1

BABYSITTING WANTED in my home. Have references. Age 3 and up. 475-2943. x52

## TODAY'S THOUGHT

By LOUIS BURGHARDT

Father's Day questions — for everyone in the family . . .

Is Dad "around the house" as often as he can be, or is he "around town" when he could or should be home? . . . How often and for what length of time does he talk to and/or play with his children? . . . Do the children joyously anticipate such meetings or do they feel and/or say "Dad spoils everything"? . . . Does he arbitrarily feel the fact of fatherhood automatically entitles him to love, respect and obedience of his children? . . . Does he make a conscious effort to help instill attitudes, qualities and traits he desires in his children — or does he usually leave that task to mother? . . . To what extent does he show qualities of integrity, morality, humor, compassion, patience and understanding? . . . Is he more generous with material things than the giving of himself with love and time? . . . Does he avoid tensions and hostilities in the home? . . . Is he proud of his children? . . . Are they proud of him?

In our opinion, most Dads (by a large majority) measure up pretty well on this sort of score card. We salute and honor them on Father's Day . . . BURGHARDT FUNERAL HOME, 214 East Middle



## + Services in Our Churches +

**FIRST UNITED METHODIST CHURCH**  
The Rev. Clive Dickens, Pastor  
Thursday, June 15—  
8:00 p.m.—Special Administrative Board meeting in the Educational Unit.

No Elizabeth Circle meeting in June.

Saturday, June 17—  
12:30 p.m.—Older Adult group will meet at the Methodist Home.

Sunday, June 18—  
10:00 a.m.—Worship service. Church school for children through the 3rd grade.

Monday, June 19—  
9:00 - 11:15 a.m.—Vacation church school for children through the 6th grade.

Tuesday, June 20—  
9:00 a.m.—Vacation church school.

7:30 p.m.—Wesleyan Service. Guild picnic.

Wednesday, June 21—  
9:00 a.m.—Vacation church school. Sarah Circle at the home of Mrs. James Daniels.

12:30 p.m.—Phoebe Circle pot-luck picnic at the home of Mrs. Raymond Schaefer. Ruth Circle will meet at the church.

8:00 p.m.—Youth and Adult Choir.

Thursday, June 22—  
9:00 a.m.—Vacation church school.

**OUR SAVIOUR LUTHERAN CHURCH**  
The Rev. William H. Keller, Pastor

1515 S. Main, Chelsea  
Each Sunday—  
9:00 a.m.—Sunday school.  
10:30 a.m.—Worship service.

**ST. JOHN'S EVANGELICAL AND REFORMED CHURCH**  
(United Church of Christ)  
Francisco

The Rev. Robert Townley, Pastor  
Every Sunday—  
10:00 a.m.—Worship service.  
10:20 a.m.—Sunday school.

**SALEM GROVE UNITED METHODIST CHURCH**  
The Rev. Harry Weeks, Pastor

Every Saturday—  
2:30 p.m.—Choir rehearsal.  
Every Sunday—  
10:00 a.m.—Sunday school.  
11:00 a.m.—Worship service.

**ZION LUTHERAN CHURCH**  
Corner of Fletcher, Waters Rds.  
(Rogers' Corners)

The Rev. John R. Morris, Pastor  
Thursday, June 15—  
9:00 a.m.—Vacation church school.

Friday, June 16—  
9:00 a.m.—Vacation church school.

Saturday, June 17—  
8:30 a.m.—Sunday school.

9:30 a.m.—Worship Conference Luther League. Picnic at Zion, Ann Arbor.

Monday, June 19—  
9:00 a.m.—Vacation church school.

Tuesday, June 20—  
9:00 a.m.—Vacation church school.

6:30 p.m.—Softball. Zion vs. St. Paul.

Wednesday, June 21—  
9:00 a.m.—Vacation church school.

Thursday, June 22—  
9:00 a.m.—Vacation church school.

**ST. BARNABAS EPISCOPAL CHURCH**  
20550 Old US-12  
The Rev. C. Walton Fitch, Vicar

Telephone 426-8815  
Every Sunday—  
9:15 a.m.—Holy Communion, first, third and fifth Sundays.

9:15 a.m.—Morning Prayer, second and fourth Sundays.

**NORTH LAKE UNITED METHODIST CHURCH**  
The Rev. Harry Weeks, Pastor

Every Sunday—  
9:30 a.m.—Worship service.  
10:30 a.m.—Sunday school.

Every Tuesday—  
7:00 p.m.—Choir rehearsal.

**BAHAI FIRESIDE**  
Every Thursday—  
8:00 p.m.—At the home of Toby Peterson, 705 S. Main St. Anyone wishing to learn about the Bahai faith is welcome.

**ST. MARY CATHOLIC CHURCH**  
The Rev. Fr. Francis Wahowiak, Pastor

Every Saturday—  
7:30 p.m.—Mass.  
Every Sunday—  
6:30, 8:00, 10:00, 11:30 a.m.—Mass.

**ST. PAUL UNITED CHURCH OF CHRIST**  
The Rev. Warner Siebert, Pastor

Thursday, June 15—  
9:30 a.m.—Vacation church school.

Friday, June 16—  
9:30 a.m.—Vacation church school.

Saturday, June 17—  
9:15 a.m.—Church school.

9:30 a.m.—Combined Choir Rehearsal.

10:30 a.m.—Worship service. Sermon title: "Con Permisso."

7:30 p.m.—Installation at Grass Lake.

Monday, June 19—  
9:30 a.m.—Vacation church school.

7:30 p.m.—Church school teachers.

Tuesday, June 20—  
9:30 a.m.—Vacation church school.

1:00 p.m.—Needle and Thread.

8:30 p.m.—Baptismal Orientation.

Wednesday, June 21—  
9:30 a.m.—Vacation church school.

1:00 p.m.—World-wide at Olga Wildmayer's.

8:30 p.m.—Baseball.

8:00 p.m.—Spaulding for Children Quarterly Board Meeting.

Thursday, June 22—  
9:30 a.m.—Vacation church school.

7:30 p.m.—Church school.

7:30 to 8:00 p.m.—Washtenaw County Department of Social Services.

**CONGREGATIONAL CHURCH**  
(United Church of Christ)  
The Rev. Paul Gerhart, Pastor

Every Saturday—  
6:30-9:00 a.m.—Men's Breakfast

Every Sunday—  
9:00 a.m.—Senior High Sunday school.

9:45 a.m.—Sunday school.

10:00 a.m.—Morning worship.

**METHODIST HOME CHAPEL**  
The Rev. R. L. Clemans, Chaplain

Every Sunday—  
8:45 a.m.—Worship service.

**ST. THOMAS EVANGELICAL LUTHERAN**  
Ellsworth and Haas Rds.  
The Rev. Daniel L. Mattson, Pastor

Thursday, June 15—  
9:00 a.m.—Vacation Bible school.

Friday, June 16—  
9:00 a.m.—Vacation Bible school.

Sunday, June 18—  
10:00 a.m.—Communion service.  
11:00 a.m.—Sunday school and Bible class.

Monday, June 19—  
9:00 a.m.—Vacation Bible school.

Tuesday, June 20—  
9:00 a.m.—Vacation Bible school.

8:00 p.m.—Church Council.

Wednesday, June 21—  
9:00 a.m.—Vacation Bible school.

8:02 p.m.—Altar Guild.

Thursday, June 22—  
9:00 a.m.—Vacation Bible school.

**FIRST CHURCH OF CHRIST, SCIENTIST**  
1883 Washtenaw Ave., Ann Arbor

Every Sunday—  
10:30 a.m.—Sunday school; morning service.

**ST. JACOB EVANGELICAL LUTHERAN CHURCH**  
12501 Riethmiller Rd., Grass Lake  
The Rev. Andrew Bloom, Pastor

Every Sunday—  
9:00 a.m.—Worship service.  
10:15 a.m.—Divine services.

**NORTH SHARON COMMUNITY BIBLE CHURCH**  
Sylvan and Washburn Rds.  
The Rev. William Enslen, Pastor

Every Sunday—  
10:00 a.m.—Sunday school.  
11:00 a.m.—Worship service.

6:30 p.m.—Young People's service.

Every Wednesday—  
7:30 p.m.—Prayer meeting.

**VILLAGE UNITED METHODIST CHURCH OF WATERLOO**  
8118 Washington St.  
Mrs. Altha Barnes, Pastor

Every Sunday—  
10:00 a.m.—Sunday school.  
11:15 a.m.—Morning worship.

First and Third Saturdays—  
7:00 p.m.—Youth Fellowship at Village Church Sunday school house.

**BETHEL EVANGELICAL AND REFORMED CHURCH**  
(United Church of Christ)  
Freedom Township

The Rev. Roman A. Reineck  
Every Sunday—  
10:00 a.m.—Worship.  
10:00 a.m.—Sunday school.

**ST. JOHN'S EVANGELICAL AND REFORMED CHURCH**  
(United Church of Christ)  
Rogers Corners

The Rev. David J. Kleis, Pastor  
Every Sunday—  
9:30 a.m.—Sunday school.  
10:30 a.m.—Morning worship.

**CHURCH OF CHRIST**  
13661 Old US-12, East  
Lionel S. Burger, Minister

Every Sunday—  
10:00 a.m.—Church school.  
11:00 a.m.—Worship service.

Babysitter will be at the church.  
6:00 p.m.—Worship service.

Every Wednesday—  
7:30 p.m.—Bible Study.

**FIRST UNITED PRESBYTERIAN CHURCH**  
Unadilla

The Rev. T. H. Liang  
Every Sunday—  
9:45 a.m.—Sunday school.  
11:00 a.m.—Worship service.

Every Tuesday—  
8:00 p.m.—Choir practice.

**GREGORY BAPTIST CHURCH**  
The Rev. Grant Lapham, Pastor

Every Sunday—  
10:00 a.m.—Worship service.  
11:15 a.m.—Church school.

6:30 p.m.—Baptist Youth Fellowship.

7:30 p.m.—Evening worship service.

**IMMANUEL BIBLE CHURCH**  
145 E. Summit St.  
The Rev. LeRoy Johnson, Pastor

Every Sunday—  
9:45 a.m.—Sunday school, nursery provided.

11:00 a.m.—Morning worship, nursery provided.

7:00 p.m.—Evening service.

Every Wednesday—  
7:30 p.m.—Family hour, prayer meeting and Bible study.

First Sunday of Month—  
7:00 p.m.—Communion service.

**FIRST ASSEMBLY OF GOD**  
The Rev. Thode B. Thodeson, Pastor

Every Sunday—  
9:45 a.m.—Sunday school.  
11:00 a.m.—Worship service.

7:00 p.m.—Evangelistic service.

Every Wednesday—  
7:00 p.m.—Midweek services.

**WATERLOO FIRST UNITED METHODIST**  
Parks and Territorial Rds.  
Mrs. Altha Barnes, Pastor

Every Sunday—  
9:15 a.m.—Morning worship.  
10:30 a.m.—Sunday school.

First and Third Saturdays—  
7:00 p.m.—Youth Fellowship at Village church Sunday school house.

## SUNDAY'S SERMON

### ★ Father's Day

Today, in an age of violence and distrust, a good example-setting father is needed by every family group. Unfortunately, there are some families, that due to a tragedy, are without a father. Then there are other families, by far more numerous, which have a father, but are living a tragedy. Why? Because the father doesn't fully realize or doesn't live up to his important responsibilities.

What are these responsibilities? They are love, understanding, and trying to be a good example. These things are more important than all the fancy cars, clothes, and materialistic items that a parent can give a child. Love and understanding are difficult for some people, because they can't buy it, they must give of themselves—their time, their patience, and their concern. It must be worked at, but the rewards are well worth it.

Another important aspect of being a good father is setting a good example. Our children try to imitate and copy us. Therefore they will end up doing as we do, rather than doing as we say. But if try to set a good example by doing as we say, we are not only strengthening our own family unit, we are training those in our households to be strong, good citizens in our community and our nation. It's up to you. Think about it.

**CHELSEA MEDICAL CENTER**  
Every Other Wednesday—  
1:30 p.m.—Worship service.

**CHELSEA BAPTIST CHURCH**  
337 Wilkinson  
The Rev. James Stacey, Pastor

Every Sunday—  
9:45 a.m.—Sunday school.  
11:00 a.m.—Worship service.

Nursery care available during all services.

6:00 p.m.—Junior and Senior Baptist Youth Fellowship.

7:00 p.m.—Evening service.

Every Wednesday—  
7:00 p.m.—Bible study and prayer meeting.

## EDWIN H. MURTO & ASSOCIATES

AUCTIONEER & REAL ESTATE BROKERS

600 Long Lake, Chelsea, Mich. (313) 475-1205

**COMPLETE AUCTION SERVICE**

Personal & Real Estate Property

None Too Big or Too Small for Us!

When your day of retirement arrives when you wish to cut down your operation or wish to sell for any reason it will be to your advantage to contact us. We have the experience, knowledge and ability to perform the one service to make a successful auction sale.

Always A Fair Market Price —

Determined By Honest Competitive Bidding

FOR QUICK CASH ON A SPECIFIED DATE

USE OUR METHOD OF SELLING YOUR PROPERTY

## Production Report Received for Cows In Lowell Spike Herd

A report of milk production levels attained by dairy cows in the area has been received from Holstein-Friesian Association of America. The actual food production output, recorded in the DHIR program, by these local Registered Holsteins is:

Nickle - Plate Senator Grace, 6869709, a four-year-old, produced 30,600 lbs. of milk and 973 lbs. of butterfat in 365 days. Green-Vale Lucy Anthony, 6785837, a three-year-old, had 19,060 lbs. of milk and 748 lbs. of butterfat in 327 days. Both are included in the herd tested for Lowell Spike, Manchester.

These new production figures may be compared to the estimated annual output of 9,388 lbs. (4,366 quarts) of milk and 345 lbs. of butterfat by the average U. S. dairy cow, notes the National Holstein Association.

Production testing is made available through the co-operative efforts of the state and local testing associations and Holstein-Friesian Association of America. Dairy-men enrolled in the program pay for the service.

## CUB SCOUT NEWS

### DEN 1, PACK 415—

Den 1 had their last meeting on Wednesday, June 7 at the home of their den mother, Mrs. George Atkinson. We made Father's Day gifts. Barry Hinz was honored by the Grand Howl for winning the Rocket Derby first prize. Jerry Ratzloff brought lollipop cookies and grape drink for treats. It was his birthday and we sang "Happy Birthday." The meeting closed with a discussion of our year's fun and accomplishments, followed by the Cub Scout promise.

Billy Freeman, scribe.

## Delicious Milk



There's thirst - quenching goodness in every glass, so serve the family milk with meals and as a real snack time treat. Call us today for regular home delivery.

Milk is Nature's wonder-food. Drink it daily!

## Hickory Ridge Farm Dairy

(Successor to Weinberg Dairy)

Stockbridge Mich.

Phone (517) 851-3000

# MOVING SALE!

Western Auto

Will Be Moving Soon.

# DISCOUNT PRICES THROUGHOUT STORE

—★—

Watch This Paper

For Moving Date and Location

## MASON'S CORNER

Shoes for your feet.  
With comfort and style.

Clothes for your body.  
Conservative or wild.

Mason is again offering you a terrific sale for the month of June. Plus 16 new safety toe shoes and boots. Two examples: Wing tips and the ever-popular glove leather construction boot.

Yes - YES - YES

Stan sells clothes plus wigs (3 models in 12 colors).

Men's Hosiery - Guaranteed 5 years.

Women's Uniforms - From \$7.95 to \$19.95.

For Appointment, Call 475-7576 after 6 p.m.

YOUR AUTHORIZED & LICENSED SALESMAN

EDDIE (STAN) STANLEY



you  
can  
relax...

**Dutch Boy**  
REG. U.S. PAT. OFF.  
is on the job!

Here's the double bonus you get every time you use "Dutch Boy" Paint. First, "Dutch Boy" transforms your home with beauty—then "Dutch Boy" makes it easier to keep beautiful.



"Dutch Boy" puts off repainting longer, too. That's why so many professional painters and homeowners use nothing but "Dutch Boy." Come in today and start relaxing the "Dutch Boy" way!

# MERKEL BROS.

Open Mon. & Fri. Until 9

Phone 475-8621

# YES

WE ARE MAKING  
LONG TERM FARM  
REAL ESTATE  
LOANS

SEE US



P. O. Box 1006

Ph. 769-2411 8645 Jackson Rd.

Ann Arbor, Mich. 48108

# how to accumulate large sums of money

People from all earning levels have found they can accumulate large sums of money at Ann Arbor Federal Savings. You too can accumulate \$10,000, \$20,000, \$40,000 or more for retirement, for security, for education, for a home or any other important personal goal.

It's really quite simple.

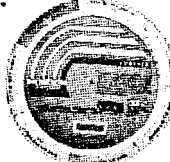
Pick a sum that you can take comfortably from your first paycheck each month—\$10.00, \$20.00 or more. Make your deposit to your Passbook Savings Account when you cash your paycheck at any of our offices.

Your deposits plus our 4 1/2% daily interest compounded quarterly go to work for you. For example: if you deposit \$20 monthly for

30 years, you will accumulate \$15,198.00; \$50 will add up to \$37,996.00.

You can leave the money in your account as a reserve and receive a monthly interest check for as long as you live, and your children thereafter for as long as they live. The \$15,198.00 will pay you \$56 a month and the \$37,996.00 will pay you \$141.

Pick out a savings plan from the chart below. Then fill out the coupon, send it to us and you'll be on the way to accumulating large sums of money! Perpetual Money Wheels are available free of charge at all offices to help you plan your savings program.



SAVE MONTHLY	IN 10 YEARS			IN 20 YEARS			IN 30 YEARS			IN 40 YEARS		
	You Will Accumulate	Receive This Monthly Check For 10 Years	Or Receive This Monthly Check For Life	You Will Accumulate	Receive This Monthly Check For 10 Years	Or Receive This Monthly Check For Life	You Will Accumulate	Receive This Monthly Check For 10 Years	Or Receive This Monthly Check For Life	You Will Accumulate	Receive This Monthly Check For 10 Years	Or Receive This Monthly Check For Life
\$ 10 Plan	\$ 1,516	\$ 16	\$ 6	\$ 3,888	\$ 40	\$ 13	\$ 7,599	\$ 79	\$ 28	\$ 13,404	\$ 138	\$ 50
\$ 20 Plan	\$ 3,033	\$ 31	\$ 11	\$ 7,777	\$ 80	\$ 29	\$ 15,198	\$ 156	\$ 56	\$ 26,808	\$ 276	\$ 99
\$ 50 Plan	\$ 7,581	\$ 78	\$ 28	\$ 19,442	\$ 200	\$ 72	\$ 37,998	\$ 391	\$ 141	\$ 67,021	\$ 689	\$ 248
\$ 75 Plan	\$ 11,372	\$ 117	\$ 42	\$ 29,163	\$ 300	\$ 108	\$ 56,993	\$ 586	\$ 214	\$ 100,531	\$ 1,033	\$ 373
\$ 100 Plan	\$ 15,163	\$ 156	\$ 56	\$ 38,883	\$ 400	\$ 144	\$ 75,991	\$ 781	\$ 282	\$ 134,042	\$ 1,378	\$ 497





## Kenzie - Smith Vows Spoken In Ann Arbor

Susan Kenzie became the bride of Ryan Smith at 4 p.m. today at the Douglas Memorial Chapel of the First United Methodist Church in Ann Arbor.

The bride is the daughter of Mr. and Mrs. Walter Kenzie of Willow Rd., Saline. The bridegroom is the son of Mr. and Mrs. Richard Smith of Sycamore Dr.

Mrs. Agatha Quirk, friend of the bride, attended as matron of honor. Kevin Smith, brother of the bridegroom, attended as best man. The immediate families were present for the ceremony.

A wedding breakfast was held at Leuthausen's in Saline immediately following the ceremony. Later that day, a wedding dinner was held in honor of the couple at Weber's Supper Club in Ann Arbor.

The bride is a 1968 graduate of Ypsilanti High school, and a 1972 graduate of Western Michigan University. The bridegroom is a 1969 graduate of Chelsea High school, and is employed by General Electric Credit Corp.

They are now residing at 730 Lamkins, Saline.



Mrs. Gary S. Sowpel

## Barbara J. Doyle, Gary Sowpel Wed Saturday in Windsor Church

Assumption church, Windsor, Ontario, Canada, was the setting for the marriage of Miss Barbara Jeanne Doyle to Gary Stevens Sowpel, Saturday, June 10.

The Rev. Fr. C. E. Lynch officiated at the 5 p.m. ceremony before 250 guests.

The bride is the daughter of Mrs. Beatrice D. Hankerd, 1223 Meadow Lane, and the late Dr. John Doyle. The bridegroom is the son of Mr. and Mrs. Steve Sowpel, 1347 Bridge Ave., Windsor, Ontario, Canada.

The bride chose a white organza, floor-length Victorian style gown with an attached train. The gown was trimmed with chantilly lace and white baby pearls. Her headpiece consisted of a floor-length veil. She carried a bouquet of white sweetheart roses, baby carnations, lilies of the valley, and baby's breath.

Mrs. Terry Fisher of Plymouth, sister of the bride, attended as matron of honor. She was attended in a blue and white gingham garden dress set off with a garden hat. She carried a white garden basket of blue and white daisies and carnations.

Miss Cheryl Hankerd of Chelsea, step-niece of the bride, attended as flower girl. Miss Thomasine Fisher, the bride's niece, was junior bridesmaid. Mrs. Darlene Bode of Allen Park, and Mrs. Brenda Osborne of Whitmore Lake, friends of the bride, served as bridesmaids. Their gowns were identical to the matron of honor's, and they carried garden baskets of blue and white daisies and carnations.

James Thomas of Windsor, Ontario, Canada, friend of the bridegroom, served as best man for the ceremony. Craig Doyle of Ohio, nephew of the bride, was ring-bearer. Leonard Wallace of Windsor, Ontario, Canada, and Derek Bode of Allen Park, friends of the bridegroom, and Patrick Doyle of Tennessee, brother of the bride, seated guests.

The reception was held at the Royal Ascot Supper Club in Lincoln Park following the ceremony. Two hundred-fifty guests attended from Jackson, Traverse City, Chelsea, Niagara Falls, N. Y., Montreal, Que., Ann Arbor, Detroit, Crossville, Tenn., Cleveland,

For a special club style sandwich, stack thinly sliced leftover roast beef or pork, coleslaw, crisp bacon, tomato slices and sliced stuffed olives between two slices of toasted wheat bread spread lightly with cream cheese.

Telephone Your Club News To GR 5-3581.

## Portage Trails Annual Meet Slated Tuesday

Portage Trails Council Boy Scouts of America will hold the annual dinner and business meeting Tuesday, June 20 at 6:30 p.m. at the Sikworth Auditorium at Clear Lake College.

Robert Armentrout of Manchester will be awarded the Silver Beaver, the highest award that an adult volunteer can receive in scouting. He is District Commissioner for the Chelsea-Manchester area.

The meeting will inform the public of the developments in the council's programs. Dave Ponitz, president, states, "As individuals who have displayed an interest in tomorrow's leaders, and as citizens who are concerned about today's problems, we're sure that you will want to be in attendance as a 'first hand' observer. After all, you are in effect 'stockholders' in this enterprise."

Dinner cost is \$3.50 per person. RSVP is requested to the Boy Scout office in Ann Arbor at the latest by Monday, June 19.



TROOP 689—

The Green Butterflies had the flag ceremony. Some of us received badges. Mr. Haywood came and gave us our certificates and we got our pictures in the paper. Monday, June 5 we had our fly-up ceremony at Veterans Park. Wednesday, June 14 we are having a family picnic at Pierce Park. We will get our badges and our stars. That will be our last meeting together.

Karen Blanchard, scribe.

## Mrs. Lloyd Merrell Returns from Extended Visits in California

Mrs. Lloyd Merrell recently returned from California, where she visited her youngest son, Ralph, and his family in Santa Ana. She was in California a total of three months, with most of her time spent at her son's home.

Mrs. Merrell also visited her oldest brother, E. Philip Ollmann and his family, of Burbank, one daughter and family in Hesperia; another brother, B. C. Ollmann and his family, of La Mirada; a cousin, Mrs. Tommy Thompson, whom she had not seen for 20 years, in Santa Monica; two weeks with her oldest granddaughter and family, Mr. and Mrs. James Hoose of Northridge; Capt. and Mrs. Charles Higgins and son, Scott, of Tucson, Ariz., who came to spend a week so they could see their grandmother; and three days spent with her girlhood chum and friend of 66 years.

The Memorial Day holiday was spent with Mr. and Mrs. Brownlee of San Hasea, Calif. Mrs. Brownlee is Mrs. Merrell's sister. One day was spent in visiting with the families in San Francisco, Calif. "The entire trip," she reports, "was greatly enjoyed and seemed like a dream. It was also very beneficial for my health."

## Magic Mirror Beauty Salon

Open Monday thru Friday  
9 a.m. to 9 p.m.  
Saturday, 8 a.m. to 3 p.m.  
PHONE 665-0816

## House of Orient Welcomes



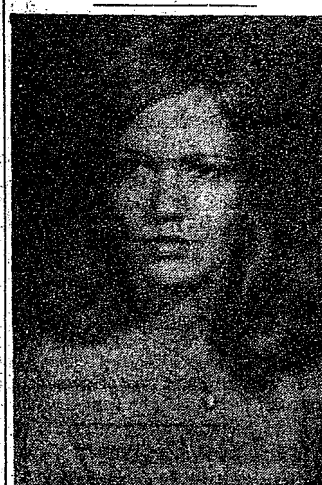
MARGARET BANK

We are happy to have Margaret join us in our effort to provide the most modern methods of hair styling available today. We are confident that her hair-styling ability and warm personality will be an asset to our salon.

CALL 475-8196 FOR APPOINTMENT



JOHNSON-HUNT: Mr. and Mrs. Bud Johnson, 4089 Aberdeen Dr., Tecumseh, announce the engagement of their daughter, Brenda Lee, to Mr. Cortland Leigh Hunt, son of Mr. and Mrs. Robert Hunt of 9849 Murphy Highway, Tecumseh. The bride-to-be is a 1971 graduate of Tecumseh High school, attended Jackson Community College, and is employed by Michigan Section, American Camping Association. Mr. Hunt is a 1971 graduate of Tecumseh High school, and is attending Ferris State College. Brenda is the granddaughter of Mr. and Mrs. Olie Johnson, 540 Chandler. An Oct. wedding is planned.



McGAW-KNOTT: Mr. and Mrs. Thomas J. McGaw of Washington St., announce the engagement of their daughter, Miss Janice Kay McGaw to James Evan Knott, the son of Mrs. Doris Knott of Kernwood Dr., and the late Evan Knott. The bride-elect is a 1972 graduate of Chelsea High school and plans to attend Foote Hospital School of Nursing in Jackson. Mr. Knott is a graduate of Chelsea High school and Eastern Michigan University. He was commissioned as a lieutenant in the U.S. Army. A September wedding is planned.

## GIRLS & DELINQUENCY

Washington—Juvenile delinquency among girls aged 10 - 17 years rose twice as fast as crime involving boys from 1969 to 1970, according to a Government crime report. It blamed the "more aggressive... more independent" behavior of girls.

## VFW Auxiliary Elects Delegates, Alternates To Nat'l Convention

Veterans of Foreign Wars Auxiliary No. 4076 elected delegates to the National Convention at the meeting Monday, June 12. They are Carol Stusser and Lila Bohemia. Alternate delegates are Lucy Platt and Mary Kniss. The convention will be held in Minneapolis, Minn., in August.

Eleven members were in attendance at the meeting.

Reports of the Sixth District meeting were given by Mary Kniss and Eulalie Packard, who attended the meeting held in Monroe, May 21. Lucy Platt, Geraldine Klink, and Mac Packard also attended.

Gifts of a check were voted out for the two Michigan graduates at the National Home of Eaton Rapids.

The Department convention convenes this week, June 15-18, in Grand Rapids. Those attending will be Geraldine Klink, Lucy Platt, Mary Kniss, and Eulalie Packard.

## OVERSIZED BILL

Detroit—When Donald Beverlin handed the clerk his electric bill, she handed it back and asked, "Do you want to pay the whole thing?" He then noticed it was for \$1,718 not \$17.18. The oversized bill was attributed to a billing error.

## CHELSEA FINANCE CORP.

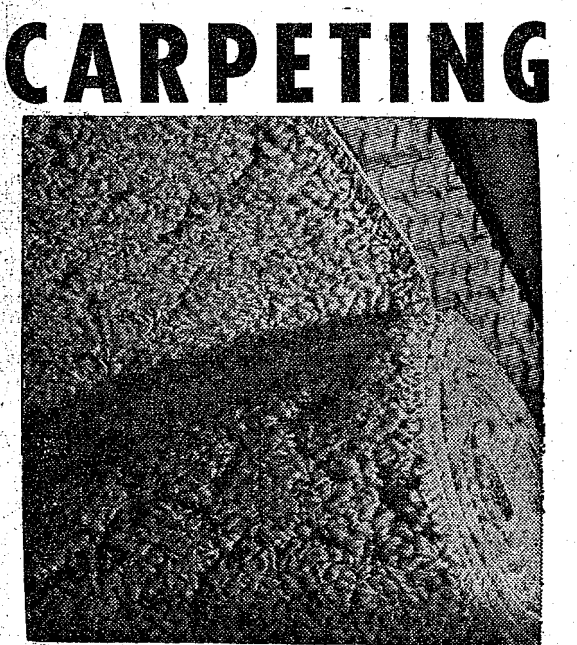
\$25 to \$1,500

For Any  
Worthwhile Purpose

See or Call  
FRANK HILL  
at 475-8631

111 PARK STREET  
CHELSEA, MICH.

## Shake the Winter Blues with new CARPETING



Hundreds of new samples  
in the latest fashion colors  
available for your selection.

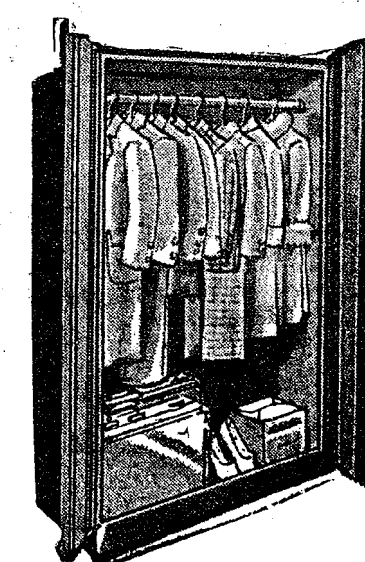
Let us give you a quotation on your job.  
WE INSTALL.

## MEABON'S TV, FURNITURE & APPLIANCE

1170 S. M-52, Chelsea

Phone GR 5-5191

## WARDROBE, UTILITY CABINET & CABINET BASE SALE



### WARDROBE CABINETS All Metal and Walnut Finish

	SALE
22" wide. Reg. price \$21.50	\$18.95
30" wide. Reg. price \$28.95	\$24.50
36" wide. Reg. price \$34.50	\$29.95
40" wide. Reg. price \$39.50	\$34.00
42" deluxe. Wood-like walnut grain doors. Reg. \$65.00	\$54.00

### BASE CABINETS Metal, White Enamel Finish

	SALE
18" x 36" height. Porcelain top. Reg. \$19.98	\$17.88
24" x 36" height. Porcelain top. Reg. \$29.50	\$26.88
24" x 36" height. Plastic top. Reg. \$35.00	\$31.50
30" x 36" height. Plastic top. Reg. \$39.95	\$35.00

## UTILITY CABINETS Metal, White Enamel Finish

	SALE
20" x 56", 4 shelves. Reg. \$21.95	\$18.98
30" x 64", 5 shelves. Reg. \$35.00	\$29.95
24" x 66", 5 shelves. Pockets inside door. Reg. \$32.90	\$28.98

## MERKEL BROS.

Open Mon. & Fri. Until 9

Phone Chelsea 475-8621

## VILLAGE BEAUTY SALON

LORETTA - CINDY - EULA  
ARLENE - SARAH - JANICE

107 N. MAIN PHONE 475-5421

Evenings By Appointment

OPEN TUESDAY THRU SATURDAY

Closed Mondays for the Summer Months.



FATHER'S DAY  
JUNE 18  
JUST FOR DAD!  
-SHIRTS-

Hundreds of new shirts  
Long and short sleeve. All new.  
By VAN HEUSEN, CAMPUS,  
MR. LEGGS, SHIRTCRAFT  
Start at \$3.99

## WORK CLOTHES MATCHING SHIRTS & PANTS

MEN'S SHORTS  
A Nice Gift for Dad.

SWIMWEAR by Campus

Big Selection of  
LEVIS - JEANS - SLACKS

TIES by Wembley

Good Selection of  
MEN'S SOCKS by Hanes

BILLFOLDS - LUGGAGE

Shop Early at

## DANCER'S

Chelsea's Friendly Dept. Store



FATHER'S DAY SUGGESTIONS  
SUNDAY, JUNE 18  
Ties - Cologne for Men - Novelty Bar-B-Q Aprons - Ashtrays  
Incense and Incense Burners - Hand-Grated Leather Belts  
Patches - Posters - Coffee Mugs - Wine Skins

TAILFEATHER BOUTIQUE  
A FUN PLACE TO SHOP  
105 N. Main, Chelsea  
Phone 475-2512





## Community Calendar



Girls interested in playing softball are to meet Thursday, June 15 (today) at the high school field, 12 noon. This includes girls in the 6th, 7th and 8th grades.

High school and community band rehearsal Thursday, June 15 at the high school band room, 7:30 p.m. Everyone welcome.

Ann Arbor Saturday Night Singers Club Dance for single adults 25 years and older at the YM-YWCA, 350 S. 5th Ave., Ann Arbor, every Saturday from 9 p.m. to 12 midnight. Features music, mixers, and refreshments. For information call 663-6068.

Emergency food collection for migrants Sunday, June 18, sponsored by the Church Women United of Chelsea.

Past Matrons of OES will meet at the home of Mrs. Lionel Vickers Thursday, June 15 at 12:30 p.m. Pot-luck luncheon.

Lima Center Study Group members meet Wednesday, June 14, 11:30 a.m. sharp at Schumm's Restaurant to eat before going on Waterloo tour.

Older Adult Group of the United Methodist church will hold a picnic Saturday, June 17, 12:30 p.m. at the United Methodist Home. Bring own table setting and a dish to pass.

Youth Livestock Judging Jambooree Saturday, June 17, at the Calderone Curran Ranches, Grass Lake. Open to all youth in Michigan. For more information, contact local extension office.

Orientation classes for teen-age volunteers at St. Joseph Mercy Hospital will be held June 19-23. For further information contact the volunteer office, 665-4141.

Pap tests are free for all area women, Tuesday mornings, at St. Joseph Mercy Hospital, Ann Arbor. Call American Cancer Society office, 668-8857, for appointment.

Chelsea Social Service, second floor of the Municipal Building, is open each Tuesday and Thursday afternoon from 2 p.m. to 5 p.m. to assist persons with problems, either through counseling, or referral to other agencies, when indicated. Limited financial help may be given. The office also maintains a clothing depot for new and used clothing and bedding which is given without charge.

Lyndon Study Club pot-luck dinner picnic at the home of Mrs. Norman Kaiser on Jaycox Rd., 12:30 p.m. Thursday, June 22.

Rummage Sale, North Lake United Methodist church, Friday and Saturday, June 23 and 24, 9 a.m. to 4 p.m. Bake Sale, Saturday, June 24 from 10 a.m. to 1 p.m.

Chelsea Camera Club Tuesday, June 20 6:30 p.m. Sylvan Township Hall. Pot-luck. Program by Kathleen Chapman: "Mexican Vacation." Guests welcome.

Cub Scout Olympics, Saturday, June 17 at Buhr Park in Ann Arbor, 2 to 5 p.m.

LaLeche League Tuesday, June 20, 8 p.m. at the home of Carol Conkey, 1106 Michigan, Ann Arbor. Joanne Hee on "Art of Breast Feeding and Overcoming Difficulties." Nursing babies welcome.

Past Noble Grands June meeting 7:30 p.m. Monday, June 19 at the home of Edith Hoffman, 715 Glazier.

Boy Scout Troop 422 will sponsor a boating class Saturday, June 10, and 24, 9-11:30 a.m., Chelsea High school cafeteria. Information call Cecil Clouse, 475-8562 after 4:30 p.m.

Inquiries regarding the Chelsea blood bank may be directed to Harold Jones in the event that Mrs. Dudley Holmes is unavailable, or to Mrs. Pauline McKenna, American Red Cross in Ann Arbor, 971-5300.

American Legion and Auxiliary hospital equipment available by contacting Don O'Dell at 475-8249.

### Graduate Honored

Mr. and Mrs. Douglas Egoles, 4640 Loveland Rd., hosted a graduation dinner in honor of their son, Richard, a 1972 graduate of Chelsea High school. Special guests were Richard's grandparents, Mr. and Mrs. Garnett Weir of Florida, and Mr. and Mrs. James Weir and family from Maryland. One hundred guests from Jackson, Ann Arbor, Dexter, Grand Haven, Cement City, Waterloo, and Pinckney attended the event.

### A BIG DIFFERENCE!

Early, bow-shaped harps with four strings weighed less than a pound, while today's 46-string concert harps weight 80 pounds.



**EARNs WCC CERTIFICATE:** Mrs. Henry (Helen) Leggett, 241 Glazier Rd., Cavanaugh Lake, has received a certificate in Institutional Food and Management from Washtenaw Community College Saturday, June 10. Mrs. Leggett completed courses in the Food Technology Department. For the past year and a half she has been food service manager of the YM-YWCA in Ann Arbor.

## BIRTHS

A daughter, Charity Louisa Olney, June 2 at St. Joseph Mercy Hospital to Mr. and Mrs. Robert Strong, 20501 Jerusalem Rd.

A son, Christopher Michael, May 31 at St. Joseph Mercy Hospital to Mr. and Mrs. Luther Salyer, 1181 Pierce Rd. Maternal grandparents are Mr. and Mrs. Albert P. Fomer and paternal grandmother is Mrs. Alice Salyer.

A son, Daniel Ralph, June 10 to Mr. and Mrs. Howard Poley, Jr., 2900 Loeffler Rd. Maternal grandparents are Mr. and Mrs. Fred Funchion and paternal grandparents are Mr. and Mrs. Howard Poley, Sr.

### Food for Migrants . . .

(Continued from page one)

Barnabas Episcopal; Mrs. Howard Kern, First Congregational UCC; Mrs. Thomas Smith, First United Methodist; Mrs. George L. Staffan, St. Mary Catholic; and Mrs. Robert Thornton, Jr., North Lake United Methodist.

Pick-up center for the commodities will be the First United Methodist church on Park St. A Michigan Migrant Ministry truck will be picking up the goods collected soon after June 18, and they will go directly to a distribution point in the field.

Pat almost any individual on the back, with soft, gentle strokes, and, as a rule, he'll purr like a kitten.

## DEATHS

### Keith E. Salyer Dies at Home Wednesday After Lengthy Illness

Keith E. Salyer, 24, of 755 Glazier Rd., Cavanaugh Lake, died at his home Wednesday, June 14 after a lengthy illness.

Born May 3, 1948, he was the son of Marvin and Eileen Lewis Salyer. He had lived in the Chelsea area all his life. A 1966 graduate of Chelsea High school, he married the former Sheila Crum Oct. 22, 1966. He was a member of the Chelsea United Methodist church. He was employed by the Dana Corp. for the past five years.

He is survived by his widow, his parents, Mr. and Mrs. Marvin Salyer of Chelsea; and a sister, Denise.

Funeral services will be held at 11 a.m. Saturday, June 17, with the Rev. Clive Dickens officiating at the Chelsea United Methodist church. Burial will follow in Oak Grove Cemetery.

Memorial contributions may be made to the American Cancer Society or the Methodist church Memorial Fund. Friends may call at the Burghardt Funeral Home.

### Lee Henry Hadley Dies at Area Nursing Home Chelsea Woman's Father

Lee Henry Hadley, 89, of 1802 N. Maple Rd., Ann Arbor, died Sunday, June 11, at the Sunnyview Convalescent Home in Ypsilanti.

Born Sept. 12, 1882 in Unadilla, he was a son of Charles and Sarah Hadley. He married Mabel Foster of Iowa, April 3, 1908. She preceded him in death on Dec. 12, 1962. He had been employed as a clerk at Schlenker Hardware Store in Ann Arbor for many years.

He is survived by three sons, Robert and Roland of Ann Arbor, and Ernest H., of Chelsea; three daughters, Mrs. Carl (Grace) Watts of Oscoda, Mrs. George (Ruth) Bauer of Chelsea, and Mrs. Almond (Josephine) Dellabaugh of Whitmore Lake; one brother, Harvey of Hayward, Calif.; 23 grandchildren; 55 great-grandchildren; and two great-great-grandchildren.

One son, Floyd, preceded him in death in 1936.

Funeral services will be held Thursday, June 15 (today) at 2 p.m. at the Staffan Funeral Home, with the Rev. Warner H. Seibert of

officiating. Burial will follow in Arborcrest Cemetery, Ann Arbor.

### Maynard R. Hoffman Former Gaylord Resident Dies at Methodist Home

Maynard R. Hoffman, 64, died Saturday, June 10 at the Chelsea United Methodist Home.

Born March 18, 1908 in Glen Lyon, Pa.; he was a son of Edward and Harriet Hicks Hoffman. He came to the Chelsea Methodist Home Sept. 5, 1967, from Gaylord. He is survived by three brothers, Willard of Pennsylvania, Earl of Ferndale, and Walter of New York; and three sisters, Mrs. M. W. (Hilda) Stauffer of Pennsylvania, Mrs. Walter (Leatha) Gutshall of Grosse Pointe, and Mrs. A. (Edna) Surynski of Gaylord.

Funeral services were held Monday, June 12 at the Chelsea United Methodist Home with the Rev. Richard L. Clemens officiating. Burial followed in Oak Grove Cemetery.

Arrangements were made by Staffan Funeral Home.

### COUNTING CALORIES

If a person eats 500 calories a day more than his body uses, he'll gain a pound a week. A little extra dessert here and there may not seem like much, but a pound a week means 52 pounds a year.

## Recreation Program Schedule

Monday, Wednesday, Friday—9-11:30 a.m.—Little League, at High school.  
Tuesday, Thursday, Friday—9-11:30 a.m.—T. Ball, at High school.  
Monday, Tuesday, Wednesday—9-11:30 a.m.—Arts and Crafts, at South school.  
Thursday, Friday—9-11:30 a.m.—Arts and Crafts, at North school.  
Monday, Tuesday, Thursday, Friday—9-11:30 a.m.—Tennis, at High school.  
Monday, Wednesday, Friday—9-12:00 a.m.—Baton, at South school.  
Monday, Wednesday—1-3:00 p.m.—Afternoon playground activities, at South school.  
Tuesday, Thursday—1-3:00 p.m.—Afternoon playground activities, at North school.

## Charlene Powers Leaves for Greece

Charlene Powers, daughter of Mr. and Mrs. Harold C. Powers, 12930 Scio - Church Rd., left Wednesday, June 14 from Metropolitan Airport to begin a six-month stay in Greece under the auspices of the National 4-H Center.

Charlene, a recent graduate of Michigan State University in agricultural communications, will spend four days in Washington, D. C., before departing for Athens, Greece. She will be sending back information about her experiences to Chelsea readers.

**Playground Helpers . . .** (Continued from page one) Wednesday, and at the North school playground on Tuesday and Thursday. Anyone interested in helping is urged to call Ken Larson at 475-2650.

Subscribe Today to The Standard!



# CHELSEA HARDWARE

110 S. MAIN

PHONE 475-1121

## Summer Sale of GUARANTEED SPECTACULARS

**BUCK-BUSTER**  
16-FOOT EXTENSION LADDER  
Extruded aluminum Modified "I" beam for added strength.  
**SALE PRICE \$15.88**

**BUCK-BUSTER**  
13-PC. - 3/8" DRIVE SOCKET SET  
9 sockets, reversible ratchet, 5" extension, 3/16", 6 point spark plug socket.  
SAVE \$5.77  
**\$9.99**

**BUCK-BUSTER**  
5/8-INCH - 75' FLEXIBLE HOSE  
Flexible for easy coiling and use.  
SAVE \$8.26  
**\$8.99**

**52. 5-FOOT - REDWOOD FOLDING TABLE SET**  
Aluminum legs fold for storage. Includes table and 2 benches.  
**SALE PRICE \$34.88**

**55. 20-INCH 3-SPEED WINDOW FAN**  
Protective full grille. One year guarantee.  
SAVE \$3.07  
**\$16.88**

**DISSTEN 12. CORDLESS ELECTRIC HAND SHEARS**  
Push-button ease. Has rechargeable battery.  
**SALE PRICE \$16.99**

**43. 2-GALLON COOLER**  
Large capacity. Nothing to rust.  
SAVE \$2.99  
**\$5.99**

**19. OSCILLATING SPRINKLER**  
Four position dial control for select areas.  
SAVE \$2.07  
**\$5.88**

**49. FOLDING WEB LAWN CHAIR**  
Sturdy 6-web chair for many seasons of comfort.  
**SALE PRICE \$5.99**

**COUPON**  
2 1/4" x 72' POLY REWEB KIT  
CHOICE OF COLORS  
**\$1.17**  
LIMIT 1 WITH COUPON

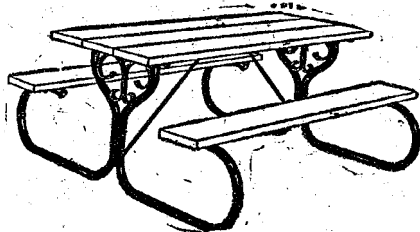
**COUPON**  
TWIN PAK "D" BATTERIES  
2 FOR **25¢**

**COUPON**  
8-QUART SPRINKLING CAN  
SAVE 96¢  
**99¢**  
LIMIT 1 WITH COUPON

## PLEASE HER

(and the whole family)

## WITH A BRAND NEW PICNIC TABLE



### FIESTA ROYALE

Heavy duty 2" O.D. steel tube base. No legs to climb over. Plank top and seats. It folds for winter storage!

SPECIALLY PRICED  
8 ft. size . . . . . only

**\$32.95**

## CEDAR LOG

Rugged roadside type for a lifetime of family use. Pre-drilled, semi-assembled, hardware included.

6 ft. \$39.95  
8 ft. \$47.75

PRICES SHOWN ARE CASH 'N' CARRY AT

# CHELEA LUMBER



## Married Male Driver

Your A-O man will save you money on your car insurance. No surcharge or higher rate. See your A-O man — he's all out for you.

**A. D. MAYER AGENCY, INC.**

"Your Protection Is Our Business"  
Phone 479-5061

115 Park St. Chelsea

**Auto-Owners INSURANCE COMPANY**

(Home office at Lansing, Mich.)





1101 M-52 CHELSEA

OPEN DAILY, 8 a.m. to 9 p.m.  
SUNDAYS, 9 to 5

WEEK END **BONUS BUYS**

N ADDITION TO OUR BIG 4 PAGE CIRCULAR

LEAN, TENDER SLICED

**PORK STEAK** . . . . . Lb. **58<sup>c</sup>** SAVE 21c LB.

LEAN TENDER

**PORK CUTLETS** . . . . . Lb. **68<sup>c</sup>** SAVE 21c LB.

FRESH

**PORK HOCKS** . . . . . Lb. **28<sup>c</sup>** SAVE 21c LB.

POLLY'S HOMOGENIZED

**MILK**  
GALLON CARTON **79<sup>c</sup>**

POLLY'S QUALITY

**BREAD**  
5 20-Oz. Loaves **\$1**

LIBBY'S

**TOMATO JUICE**  
SAVE 12c 3 46-Oz. Cans **\$1**

ELF SLICED

**PEACHES**  
SAVE 5c 29-Oz. Can **29<sup>c</sup>**

READ'S GERMAN

**POTATO SALAD**  
SAVE 10c 15 1/2-Oz. Can **29<sup>c</sup>**

ARMOUR'S

**TREET**  
SAVE 7c 12-Oz. Can **49<sup>c</sup>**

HUNT'S

**CATSUP**  
SAVE 8c 26-Oz. Bottle **39<sup>c</sup>**

FRENCH'S

**MUSTARD**  
24-Oz. Jar **29<sup>c</sup>**

WYLER

**LEMONADE**  
SAVE 40c 48-Oz. **\$1.19**

JIFFY

**BISCUIT MIX**  
SAVE 6c 40-Oz. Box **35<sup>c</sup>**

LIQUID DETERGENT

**CHIFFON**  
SAVE 6c 3 40-Oz. Pkgs. **\$1**

FAMILY SCOTT

**TOILET TISSUE**  
SAVE 35c 3 4-Roll Packs **\$1**

BIRDSEYE

**COOL WHIP**  
SAVE 10c 9-Oz. **49<sup>c</sup>**

CHEF DELIGHT

**CHEESE FOOD**  
SAVE 14c Lb. **65<sup>c</sup>**



**NEW FIRST AIDERS:** These Girl Scouts of Troop 689 have completed a six-week training course in First Aid under the direction of Don Haywood, affiliated with the Ann Arbor chapter of the American Red Cross. Front row, left to right: Beth Wireman, Joan Weber, Terese Hoffman, Karen Blanchard, Lori Van Riper, and Valisa Pletcher.

Second row, left to right: Tammy Sabo, Laurie Spear, Ventia Scott, Elizabeth Herrst, Annie Umstead, and Marilyn Hafner. Back row, left to right: Don Haywood, Karen Liebeck, Kim Boyce, Jeryl Herrick, Laurie Flinn, Michele Hafner, and Mrs. Frederick (Carol) Hoffman, troop leader.

## 18 Girl Scouts Complete Red Cross First Aid Course

Girl Scout Troop 689 has finished a six-week training course in First Aid under the direction of Don Haywood. Haywood is affiliated with the Ann Arbor chapter of the American National Red Cross and the Ann Arbor Fire Department.

Eighteen girls have worked with techniques including treatment of various wounds, shock, broken

bones, burns, and poisoning. Re-suscitator Annie came to visit the troop, providing an opportunity for each girl to participate in artificial respiration.

Haywood stressed to the girls the involvement of drugs in treatment of patients and the hazards of drug abuse.

"The most important objective of first aid teaching is accident pre-

vention and applied safety-mindedness," said Haywood. "The second is to teach what to do and what not to do in case of accident or sudden illness."

Troop leader Mrs. Carol Hoffman indicates those girls receiving certificates have had adequate practice on skills in class and have satisfactorily completed the theoretical work.

### HELLER ELECTRIC & INSULATING

Now  
**Edison Approved**  
Electric Heat  
Dealer

Call us for estimates on all types of wiring.

We insulate old or new homes with Therma-tron insulation and install electric heating systems.

CALL 475-7978  
or 475-2096

## Film on County Alcohol Safety Action Program Now Available

Local community, church, and service groups can now schedule a summer showing of "Guilty Victim: The Problem Drinker Behind the Wheel," newly produced in Washtenaw County by local filmmaker, Bob Ferguson of Ann Arbor.

The film is a documentary on the Washtenaw Alcohol Safety Action Program and features interviews with several county residents who are involved in the project's Antabuse Program. (Antabuse is a drug which helps a person stop drinking because it will make him sick when combined with alcohol.) These clients of the Washtenaw Council on Alcoholism tell on film how the program has altered their lives since they were screened by court counselors for the program.

With the new court procedures outlined in the film, these drunk driving offenders and many others over the past year and a half were given the option of probation and participation in a treatment program, once it was determined that, for them, alcohol had become a serious problem.

Viewers will see how some of their neighbors are being helped through group discussions and education as well as through the use of Antabuse, to find a more satisfying future without alcohol dependency.

Showings can be arranged by calling Nancy Boyer at the Washtenaw Council on Alcoholism (971-7900). She will arrange for a speaker to show the film and answer questions about the Alcohol Safety Action Program. Programs can also be planned to cover any aspect of the drinking and driving problem.

**SAD STATISTIC**  
Over 70,000 children under the age of five are involved in accidental poisonings each year.

## The Chelsea Standard

Second Section—Pages 9-14

THE CHELSEA STANDARD, THURSDAY, JUNE 15, 1972

## St. Louis School Notes

The boys returned home Friday night from their trip to Washington, D.C. They stopped to visit the Don Guanella school in Pittsburgh, Pa., from Monday through Wednesday. While there, the boys saw the Liberty Bell, Independence Hall, and Valley Forge.

While in Washington, the boys and staff stayed at the Catholic University, which was a big hit with its cafeteria where they could choose their own food.

They toured the White House, thanks to arrangements made by Rep. Marvin Esch. They also visited Arlington Cemetery and the grave of John F. Kennedy, the Washington Monument, and the FBI Building.

While enjoying a picnic lunch, the boys were surprised to notice all the "bums" that were begging for food.

Sunday, June 11 the boys presented their concert, which was well-attended.

Tuesday, June 13, the boys traveled to Detroit for their annual excursion to Bob-Lo Island. They

were the guests of Joe Vitale, whose orchestra plays on the "Colombo," one of the boats over to the island.

Once on the island, the boys enjoyed rides and treats provided by their many friends, especially the policemen.

On Wednesday, June 14, the Women's Fellowship of St. Paul's furnished a picnic lunch for the boys and staff. It was at this time that awards were presented for the year.

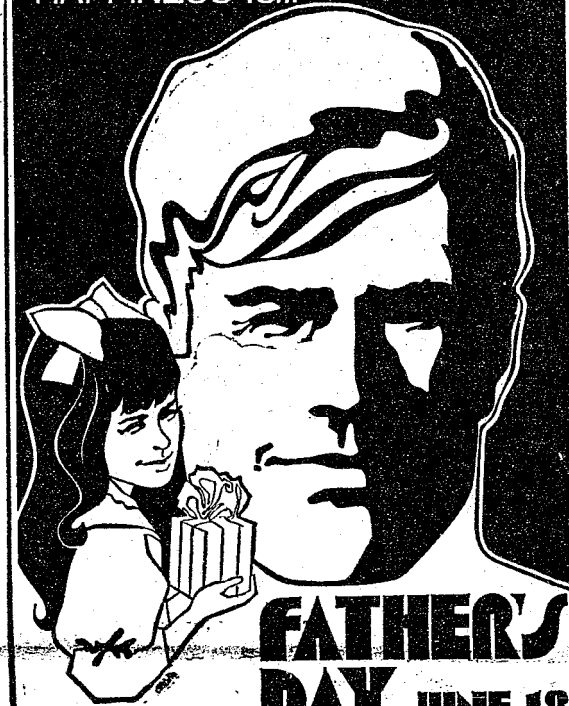
On Saturday, June 17, the boys will travel to the State Olympics in Adrian. Approximately 20 will be participating.

Sunday, June 18, is the date that the boys return home with their families for summer vacation.

### ON BLACK LUNG

Washington — The House has passed legislation to liberalize and continue federal benefits to coal miners afflicted with black lung disease. The measure, already passed by the Senate, was sent to the President.

HAPPINESS IS...

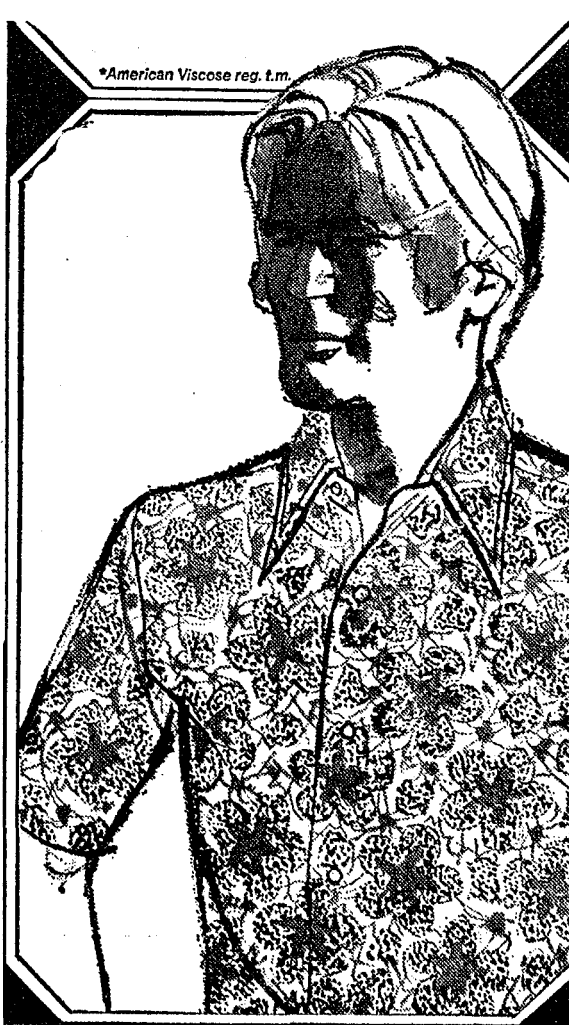


AND A GIFT BY  
**VAN HEUSEN**

**Vanknit**

Now, Van Heusen's incredible Vanknits in sport shirts...comfortable, high fashion knit shirts with a fantastic wrinkle-free fit. Machine washable and dryable too. 50% Avril® rayon, 50% polyester with long-point Brooke collar.

\$10 to \$13



**STRIETER'S MEN'S WEAR**

"The Place To Go for Brands You Know"

## CHELSEA JAYCEE YOUTH HORSE SHOW SUNDAY, JUNE 18

Beginning at 9 a.m.

## CHELSEA FAIRGROUNDS

### CLASSES & AGE GROUPS

1. Fitting & Showing, Ponies — Jr.
2. Fitting & Showing, Horses — Jr.
3. Fitting & Showing, Horses — Sr.
4. Horsemanship - Ponies — Jr.
5. Horsemanship - Horses — Jr.
6. Horsemanship, Horses — Sr.
7. Western Pleasure, Pony, Horse — Jr.
8. Western Pleasure, Horse — Jr. & Sr.
9. English Horsemanship — Jr.
10. English Horsemanship — Sr.
11. Boot Race - Ponies — Jr. & Sr.
12. Flag Race - Ponies — Jr.
13. Flag Race - Horses — Jr. & Sr.
14. Pole Bending, Pony & Horses — Jr.
15. Pole Bending, Horses — Jr.
16. Off & On, Pony & Horse — Jr.
17. Cloverleaf, Ponies — Jr. & Sr.
18. Cloverleaf, Horses — Jr. & Sr.
19. Rescue Race, Horses, Riders and pickups must include one of each age group. No trophy for this event. Duplicate ribbons for 6 places will be awarded.
20. Speed & Action, Ponies & Horses — Jr.
21. Speed & Action, Horses — Sr.

**FREE ADMISSION** Class Trophy & 6 Ribbons for Each Event  
Free Entry to 1st place winners of Horsemanship Classes for All Speed Events

JUDGE:  
MERLE SIBLEY  
Chelsea, Mich.

PONY CLASSES  
54" and under

AGE GROUPS  
Sr.: 14-18  
Jr.: 13 & under

ENTRY FEES FOR EACH CLASS: \$2 for Horse, \$1 for Pony

## FREE CLINICS

FREE CLINICS for show assistance are being formed. Help and information are available to anyone interested. Please call as soon as possible.

MRS. JEAN BOTSFORD  
475-2539

ANDREW FORD  
475-8952







## Fast Pitch 1972 Schedule

All Games at CHS Field  
AMERICAN LEAGUE

Date—6:30 p.m.	8:15 p.m.
June 2—Jiffy Mixes vs. Jiffy Market	Palmer Mtr. vs. St. Paul's
June 6—Wolverine Bar vs. Jiffy Mkt.	Jiffy Mixes vs. Zion
June 12—Sweepsters vs. St. Paul's	Palmer Motor vs. IPSCO
June 14—Wolverine Bar vs. Zion	IPSCO vs. Dunlavy & Groh.
June 16—Sweepsters vs. IPSCO	Dunlavy & Groh. vs. St. Paul's
June 20—Zion vs. St. Paul's	Wolv. Bar vs. Dunlavy & Groh.
June 26—Jiffy Market vs. Sweepsters	Jiffy Mix vs. Palmer Mtr.
June 28—Wolverine Bar vs. IPSCO	Cav. Lk. Store vs. Palmer Mtr.
July 5—Wolv. Bar vs. Cav. Lk. Store	Jiffy Market vs. Zion
July 10—St. Paul's vs. IPSCO	Dunlavy & Groh. vs. Palmer
July 12—Zion vs. Cav. Lk. Store	Dunlavy & Groh. vs. Sweep.
July 16—Jiffy Mkt. vs. Cav. Lk. Store	Wolv. Bar vs. Jiffy Mixes
July 24—Cav. Lk. Store vs. Jiffy Mix	Sweepsters vs. Palmer Mtr.
July 26—Palmer Mtr. vs. Wolv. Bar	IPSCO vs. Zion
Aug. 1—Sweepsters vs. Wolv. Bar	Palmer Mtr. vs. Zion
Aug. 7—1st A. L. vs. 2nd N. L.	2nd A. L. vs. 1st N. L.
Aug. 9—ALL STAR	

### NATIONAL LEAGUE

Date—6:30 p.m.	8:15 p.m.
June 31—Cav. Lk. Store vs. Wolv. Bar	Zion vs. Jiffy Market
June 5—IPSCO vs. St. Paul's	Palmer Mtr. vs. Dunlavy & Groh.
June 7—Cav. Lk. Store vs. Zion	Sweep. vs. Dunlavy & Groh.
June 13—Cav. Lk. Store vs. Jiffy Mkt.	Jiffy Mixes vs. Wolv. Bar
June 19—Jiffy Mixes vs. Cav. Lk.	Palmer Mtr. vs. Sweepsters
June 21—Jiffy Mkt. vs. St. Paul's	Jiffy Mixes vs. Sweepsters
June 27—Cav. Lk. Store vs. IPSCO	Zion vs. Dunlavy & Groh.
July 3—IPSCO vs. Sweepsters	St. Paul's vs. Dunl. & Groh.
July 7—Jiffy Mkt. vs. Jiffy Mixes	St. Paul's vs. Palmer Mtr.
July 11—Jiffy Mkt. vs. Wolv. Bar	Zion vs. Jiffy Mixes
July 17—St. Paul's vs. Sweepsters	IPSCO vs. Palmer Mtr.
July 19—Zion vs. Wolv. Bar	Dunl. & Groh. vs. IPSCO
July 25—St. Paul's vs. Jiffy Mixes	Sweepsters vs. Cav. Lk. Store
July 31—St. Paul's vs. Cav. Lk. Store	Dunl. & Groh. vs. Jiffy Mkt.
Aug. 2—IPSCO vs. Jiffy Market	Dunl. & Groh. vs. Jiffy Mixes
Aug. 8—City Champs	

Teams listed first will be the home teams. The home team will be given one of the game balls if there are two balls left that the game started with. Rainouts will be a one-hour wait on first game and play the second game with the curfews moved back.

## Slow Pitch 1972 Schedule

All Games at CHS Field

Date—6:30 p.m.	8:15 p.m.
June 1—N. Am. Rock. vs. Teachers	Prv Grnds. vs. Meth. ch.
June 15—Proving Grnds. vs. Teachers	N. A. Rock. vs. Meth. ch.
June 20—Teachers vs. Methodist ch.	N. A. Rock. vs. Prv. Grnds.
July 13—N. Am. Rock. vs. Teachers	Prv. Grnds. vs. Meth. ch.
July 27—Proving Grnds. vs. Teachers	N. A. Rock. vs. Meth. ch.
Aug. 4—Teachers vs. Methodist ch.	N. A. Rock. vs. Prv. Grnds.
Date—6:30 p.m.	8:15 p.m.
June 8—Prv. Grnds. vs. N. A. Rock.	Meth. ch. vs. Teachers
June 22—Meth. ch. vs. Prv. Grnds.	Teachers vs. N. A. Rock.
July 6—Meth. ch. vs. N. A. Rock.	Teachers vs. Prv. Grnds.
July 20—Prv. Grnds. vs. N. A. Rock.	Meth. ch. vs. Teachers
Aug. 3—Meth. ch. vs. Prv. Grnds.	Teachers vs. N. A. Rock.
Aug. 10—N. A. Rock. vs. Meth. ch.	Teachers vs. Prv. Grnds.

Teams listed first will be the home teams. The home team will be given one of the game balls if there are two balls left that the game started with. Rainouts will be a one-hour wait on first game and play the second game with the curfews moved back.

League Director: Oren Wireman, Home 475-2924, work 475-3612, ext. 262.

## Chelsea Softball League

Standings as of June 8

FAST PITCH	
American League	
Grohnert and Dunlavy	2 0
St. Paul's Church	2 0
IPSCO	0 1
Sweepsters	0 1
Palmer Motor Sales	0 2
National League	
Wolverine Bar	2 0
Zion of Rogers Corner	2 1
Jiffy Mixes	1 1
Jiffy Market	1 2
Cavanaugh Lake Store	0 2

Slow Pitch	
North American Rockwell	2 0
Methodist Church	1 1
Chelsea Teachers	1 1
Chrysler Proving Grounds	0 2

### Sports Quiz Answers . . .

1. Sept. 17.
2. The Chicago Bears—in Chicago.
3. Williamsport, Pennsylvania.
4. The National League.
5. \$3,500,000.

## Inverness Golf League

Standings as of June 12

	Pts.
Stan's Flower Shop	24½
Central Fibre	23½
Chelsea Milling	18½
Chelsea Lanes	17½
3-D Sales	17½
Seitz's Tavern	17½
Lundell Forging	15½
Delf's Paint	14½
MeaBon's	14½
Longworth Plating	14
Dancer's	14
A. D. Mayer Ins.	12½
Palmer's T-Birds	12½
The Pub	11½
Dana Corp.	11½
Inverness Inn	11
Schumm's	10½
Chelsea Lumber	9

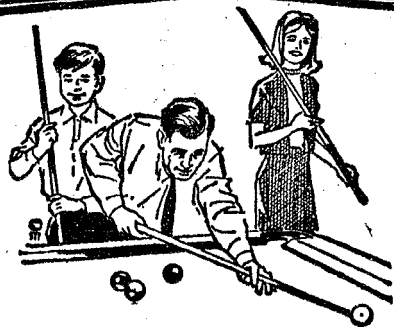
### MARS HAS ICE CAP

Pasadena, Calif. — Scientists studying photographs of Mars have reported the discovery of a 20-mile wide permanent ice cap on the planet's south pole. The photographs were taken by Mariner 9 spacecraft.

### WAGES UP

The Labor Department has reported that wages across the country, both union and nonunion, have risen 3 per cent in the four months since the wage-price freeze ended.

## Billiards THE FAMILY GAME



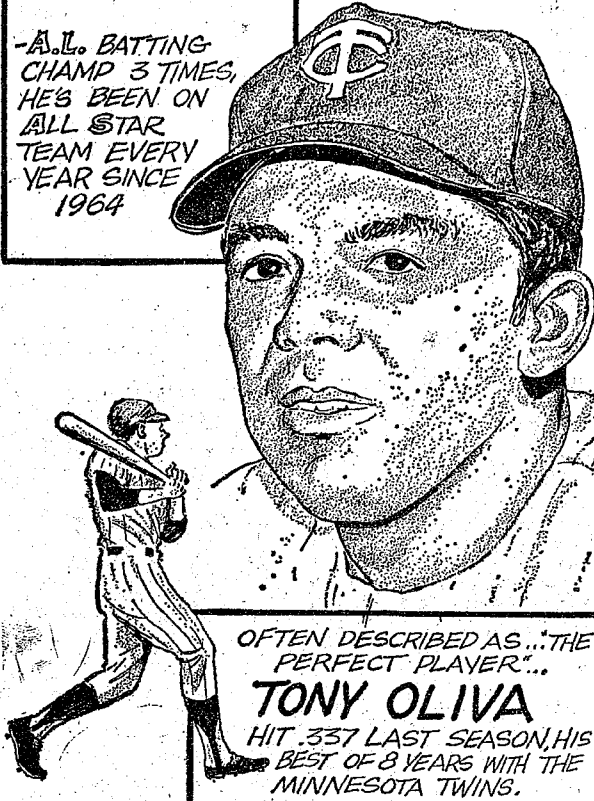
## New Fun Game, Easy To Play . . . All Can Learn!

Try billiards for an evening's fun. It's new . . . exciting . . . easy to learn . . . the whole family can play together . . . great fun, and so inexpensive!

**CHELSEA LANES**  
1180 M-52 Phone GR 5-8141

## SPORTS CORNER

A.L. BATTING CHAMP 3 TIMES, HE'S BEEN ON ALL STAR TEAM EVERY YEAR SINCE 1964

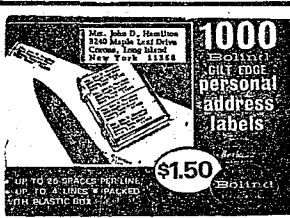


OFTEN DESCRIBED AS "THE PERFECT PLAYER" . . .  
**TONY OLIVA**  
HIT 337 LAST SEASON, HIS BEST OF 8 YEARS WITH THE MINNESOTA TWINS.

### Babe Ruth League Schedule

June 19—Chelsea "A" vs. Manchester "A".
June 19—Chelsea "B" vs. Dexter "A".
June 20—Chelsea "C" vs. Manchester "B".
June 21—Chelsea "A" vs. Chelsea "B".
June 22—Chelsea "A" vs. Dexter "A".

Games will be played at 5 p.m. at South school, except on weekends, when they will be played at the Chelsea High school diamond.



Now Available at  
**The Chelsea Standard**

## Karate Class Being Offered

A Tae Kwon Do demonstration and quarterly promotional test will be held at 7 p.m. Friday, June 16, at Huron High school gymnasium in Ann Arbor. The public is invited to attend free of charge. Attending as guest of honor will be General Hong H. Choi of Seoul, Korea, the highest ranking Tae Kwon Do practitioner in the world.

A special summer Tae Kwon Do program will begin Tuesday, June 13, at 7 p.m. at North Elementary school, if at least 10 people register. Interested persons should call 665-5555 to submit their names. This program is open to men and women and children at least 8 years old. The fee is \$10 a month. Daily classes in Ann Arbor will continue through the summer.

The Chelsea Standard, Thursday, June 15, 1972 11

## Federal Screw Works Unit of Local 437 Will Vote Friday

Federal Screw Works Unit, Amalgamated Local No. 437 UAW, will hold its election of officers Friday June 16 from 10 a.m. to 6 p.m. at the Union Hall, 218 S. Main St.

Running for chairman are Dave Ashbaugh and Lushin Salyer. Up for the position of vice-chairman are Arthur Minix, Gene Hageman, and Richard Scripser. Three committeemen will be elected. The candidates are Dean McConeghy, Homer Kuhl, Hershell Howard, Ott Risner, and Disa Vickrey. Lorn Fletcher is running for recording secretary. The night steward position will be filled by either Henry Patrick, Clem Scherdt, or David Richard Mays.

## "Sure I didn't interrupt anything important, Pop?"

You filled the emptiness. Your voice . . . turned his whole day around. And all it took was a long distance call.

Now anyone can lower the cost of loving simply by dialing direct on long distance calls within Michigan instead of going through the operator. You save 40% by dialing direct weekdays after five, and weekends from 5 p.m. Friday till 5 p.m. Sunday. Dial direct any other time—save 20%.

And if you talk long distance within Michigan for one minute, you pay for one minute, not three.

Know someone in another town who could use a lift? Don't hesitate to call . . . often.

## You can lower the cost of loving by 40%

Here's when to direct dial long distance and save

Mon. thru Fri.	Sat.	Sunday
7 AM TO 5 PM	40%	40%
5 PM TO 7 AM	40%	40%

Discounts also apply to station-to-station calls in areas where direct dialing is not yet available.

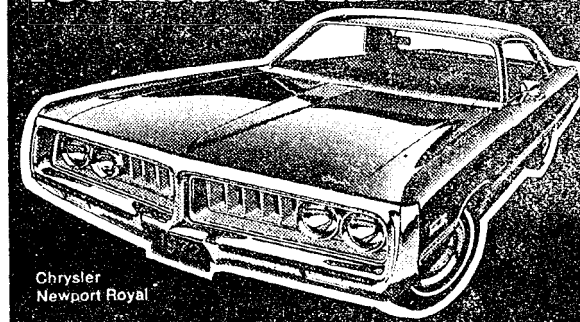


## Joy is discovering it only takes \$58.50 more to move up to a big, beautiful Chrysler.

	Newport Royal 4-Dr. Sedan	Chevy Caprice 4-Dr. Sedan
Base Vehicle MSRP	\$4,035.00	\$4,008.90
Automatic Trans.	Std.	Std.
Power Steering	Std.	Std.
Power Brakes	Std.	Std.
Radio—AM	90.35	65.00
Wheel Covers	38.40	32.00
Whitewall Tires	18.95	Std.
Clock	Std.	Std.
Engine 400 CID	Std.	Std.
Exterior Ornamentation	16.70	33.20
Protective Side Molding	Std.	Std.
Wheel Lip Molding	N/A	Std.
Belt Molding	Std.	Std.
Sill Molding	N/A	N/A
Total	\$4,197.40	\$4,138.90
Difference		\$58.50 Less

Based on a comparison of manufacturers' suggested retail prices with equipment listed. Prices exclude state and local taxes, destination charges and optional equipment other than that listed above. \*Ford's price standard on comparable equipment is \$38,650. New York City Royal is \$38,650.

## Joy is a comforting fact, like Chrysler is the roomiest car in America.



Chrysler Newport Royal is every inch a big car—the roomiest production car in America, according to Automotive Industries. But another comforting fact is that Royal is priced around a comparably-equipped Ford LTD Brougham and Chevy Caprice. That's what we mean by joy.

## Joy is discovering that Chrysler Newport Royal is priced lower than a Ford LTD.

	Newport Royal 4-Dr. Sedan	LTD Brougham 4-Dr. Sedan
Base Vehicle MSRP	\$4,035.00	\$4,031.00
Automatic Trans.	Std.	Std.
Power Steering	Std.	Std.
Power Brakes	Std.	Std.
Radio—AM	90.35	64.37
Wheel Covers	38.40	31.72
Whitewall Tires	18.95	Std.
Clock	Std.	51.63
Engine 400 CID	Std.	Std.
Exterior Ornamentation	16.70	33.20
Protective Side Molding	Std.	Std.
Wheel Lip Molding	N/A	Std.
Belt Molding	Std.	Std.
Sill Molding	N/A	Std.
Total	\$4,197.40	\$4,211.92
Difference		\$14.52 More

\*Based on a comparison of manufacturers' suggested retail prices with equipment listed. Prices exclude state and local taxes, destination charges and optional equipment other than that listed above.

# We're trying to put more Joy into your car buying and driving.

**VILLAGE MOTOR SALES, INC.**  
1185 MANCHESTER ROAD  
CHELSEA, MICHIGAN



## Washtenaw County's Average Family Income Listed at \$12,294

Average family income was \$12,294 in Washtenaw county in 1969, compared with \$11,032 for the state, according to a report on the 1970 census by the Bureau of the Census, U.S. Department of Commerce. Per capita income for the county amounted to \$3,767, the report shows.

The 1970 census counted 234,103 residents in the county; four percent were foreign born and 11 percent native born with one or both parents of foreign birth.

Among the county's 214,383 inhabitants age 5 and over in 1970, 3,601 were living in a different

county within the state in 1965, and 30,304 in a different state.

In the population age 16 and over, 72 percent of the men and 49 percent of the women were in the labor force. Among the employed, 56 percent were holding white collar jobs, and 31 percent were government workers.

About 46 percent of the married women with husband present were in the labor force, and 31 percent of these wives had children under six.

There were 92,305 persons 3 to 34 years old enrolled in school. In the 25-and-over population, 67 percent of the men and 68 per-

cent of the women were high school graduates.

Copies of the report, "General Social and Economic Characteristics, Michigan," PC(1)-24C, are available for \$3.25 each from the Superintendent of Documents, U. S. Government Printing Office, Washington, D. C. 20402, or from U.S. Department of Commerce field offices located in major cities.

### APPROVES OIL IMPORTS

President Nixon has approved a 15 per cent increase in oil imports for the remainder of 1972 to offset insufficient U. S. production.



PHIL WEIS

## Dana Names New Product Engineer For Chelsea Plant

The Power Equipment Division of Dana Corp. announces the assignment of Phil Weis to the position of Product Engineer, at the Division's Chelsea facility.

A graduate of the University of Toledo with a Master's Degree in Engineering, Weis' most recent assignment was with Dana's Corporate Research and Development section in Toledo.

### Eight from Chelsea Earn Degrees at WCC

Eight Chelsea residents were among the 335 students receiving Associates Degrees from Washtenaw Community College in ceremonies held Saturday, June 10.

Receiving recognition for graduation in December were William D. Adams and Mitchell Picklesimer. April graduates included James J. Juergens, John R. Perry, and Douglas Schrader, all of whom graduated with honors.

Others receiving degrees are Robert J. Allen and Kathryn J. Smith, both graduating with honors, and Mrs. Linda L. Hess.

### Caryl Thornton Named To Albion Dean's List

Caryl A. Thornton, daughter of Mr. and Mrs. R. H. Thornton, 14215 Riker Rd., has been named to the 1972 spring semester Dean's list at Albion College.

Caryl, a sophomore at Albion, has maintained a 3.3 or better scholastic average (based on a 4.0 system) while carrying a full class schedule.

Albion College, located in south-central Michigan, is the first private, liberal arts college in Michigan to have a chapter of Phi Beta Kappa.

### LATE WINNER

Wellington, Ohio—After spending a year and a half collecting 80,000 soft drink bottle caps, Mrs. Janice Querin found out the drink company had ended the contest. For her efforts, The company awarded her a minibike and color TV set.

## Scott Badges Given at Awards Court

Boy Scout Troop 476 held their Court of Awards Monday, June 6, at 7:30 p.m. at South school.

David Hall and Doug Wetzel received their Tenderfoot badges. Second Class badges were awarded to David Stahl and Don Hall. James Stahl, Dan Cobb, and Doug Kalmbach received their First Class Badge. Robert Heydlauf and Steve Worden were awarded their Star badges.

Merit badges were given to Robert Burgess for plumbing and athletics; Mike Stoner for scholarship; Robert Heydlauf for reading and citizenship in community; and Rodney Branham for camping, agriculture, coin collecting, a h-i-l-e-s, salesmanship, reading, surveying, rowing, metalwork, personal fitness, home repairs, dog care, and automotive safety.

Year pins were given to Dave Stahl and Mike Rowe for one year; James Stahl and Mark Kern for two years; Doug Kalmbach and Don Oesterle for three years; Tony Hafner, Dennis Cosgrove, and Tom Hepburn for five years; and Rodney Branham, Robert Heydlauf, Peter Stahl, and Steve Worden for six years.

Doug Kalmbach, Bill Kalmbach, Tony Hafner, and Don Oesterle received perfect attendance pins.

David Stahl and Mike Stoner received the Fifteen Days and Nights Camping Award.

It was announced that Robert Burgess, Robert Heydlauf, Steve Schanz, Mike Stoner, James Stahl, and C. Stoner were noted in to be members of the Order of the Arrow.

—Don Oesterle, scribe.

Subscribe Today to The Standard!



J. L. HESS

## Lee Hess Leaving Chelsea for New Position with Dana

J. L. (Lee) Hess, 58 Chestnut Dr., has been appointed plant manager of Dana Corporation's newly acquired Edgerton, Wis., plant, effective June 1. This plant was purchased to expand the Spicer Axle Division's capacity in line with the industry's demand for truck axles.

Hess has been plant manager at the Chelsea plant of Dana's Power Equipment Division since Feb. 1, 1966.

Prior to that, Hess served as assistant plant manager, cost control supervisor, at the Fort Wayne, Ind., plant.

### ON UNEMPLOYMENT

The Bureau of Labor Statistics reports the unemployment rate for April at almost 6 per cent. The rate has remained unchanged for 18 months.



## PROBLEMS??

That's why we're here!

Trust us. We're the guys who know the inside story... and our shop is equipped for any car emergency. Service is our specialty. So bring your problems to us.

TIRES - BATTERIES - ELECTRONIC TUNE-UPS  
BRAKE SERVICE - WHEEL ALIGNMENT - WRECKER SERVICE

## Fred's Standard Service

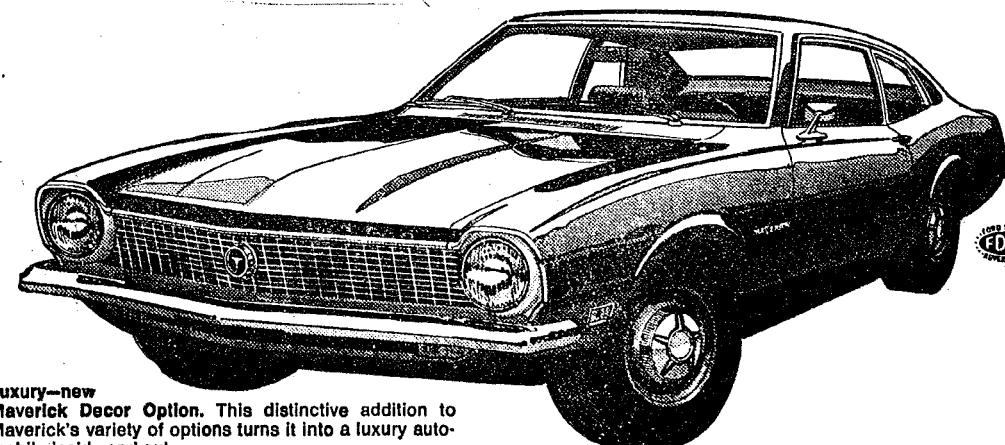
889 S. Main, Chelsea

Phone 475-2804

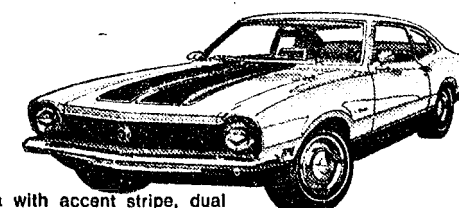
Spend 15 minutes with your Ford Dealer.

Discover how much style, luxury, and room you can get in Ford Maverick...for how little.

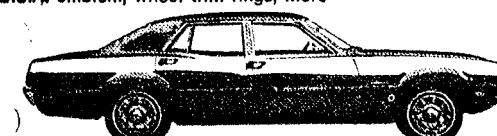
Compare sticker prices for base 2-door models: Not only is Maverick priced less than Nova, Hornet and Duster. It also beats Opel, Datsun 510, and VW 113.



Luxury—new Maverick Decor Option. This distinctive addition to Maverick's variety of options turns it into a luxury automobile inside and out.



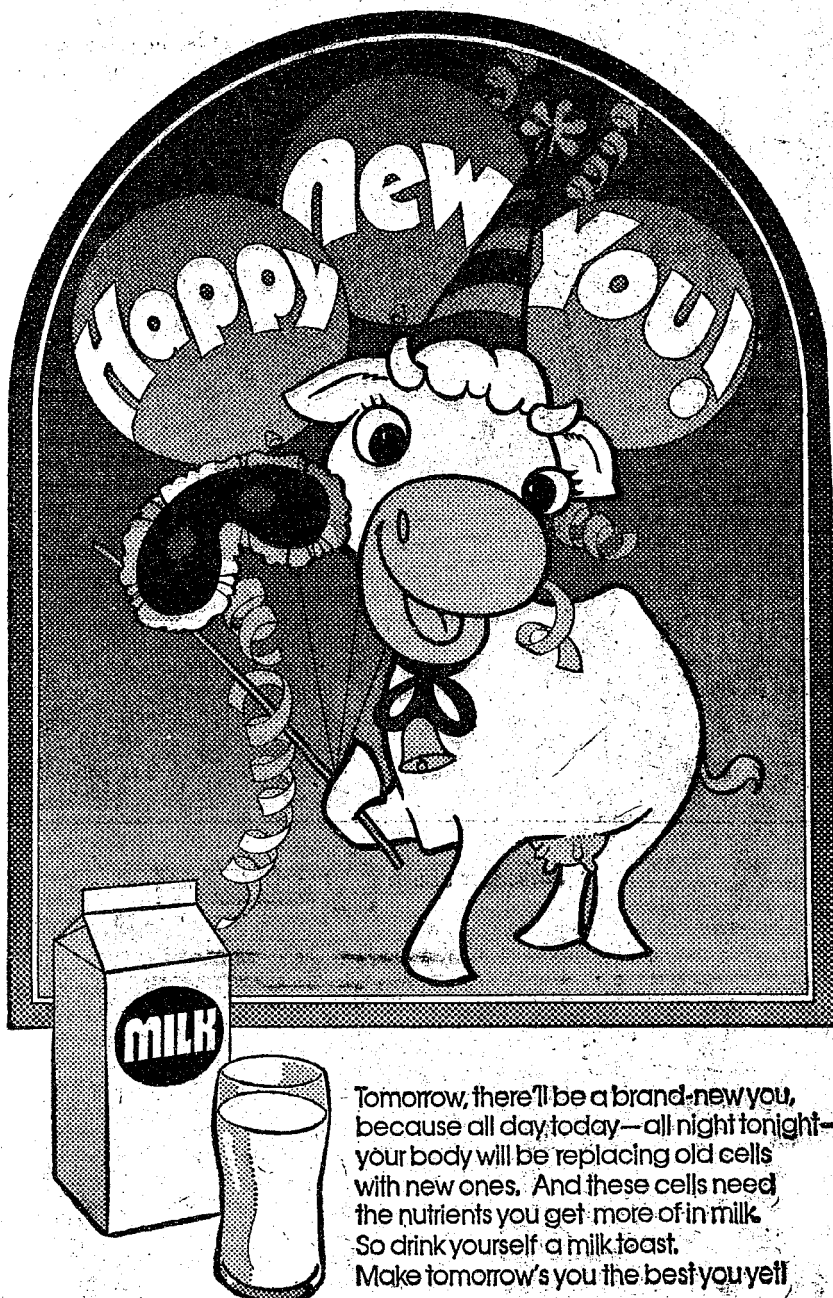
Style—new Maverick Sprint with accent stripe, dual racing mirrors, U.S.A. emblem, wheel trim rings, more



ROOM—4-Door Maverick. Family-sized with plenty of stretch-out room. Especially for rear seat passengers. Plus the convenience of two extra doors.

FORD DEALER  
MONEY-  
SAVING  
MAVERICKS

PALMER MOTOR SALES, INC.  
CHELSEA, MICHIGAN



Tomorrow, there'll be a brand-new you, because all day, today—all night tonight—your body will be replacing old cells with new ones. And these cells need the nutrients you get more of in milk. So drink yourself a milk toast. Make tomorrow's you the best you yet!

Michigan Milk Producers Association



Gulf Solar Heat Heating Oil pipeline that never plugs up!



Another GALLUP-SILKWORTH Service

ANN ARBOR: 769-8100

YPSILANTI: 482-8900

DEXTER: 426-8113



## Personal Notes

Mrs. Viola Knoll visited her mother and family, Mr. and Mrs. Echer Risher, Jr., of Trenton, O., on Friday June 2 to Monday, June 5. While there she attended graduation of her grandson, on Sunday, June 4. Keith, a member of the honorary society of American high school students of Edgewood High School in Trenton. The 179 students are the second graduating class of the school.

Dr. and Mrs. Eimer L. Hammond returned to their home in Oxford, Miss., after spending a couple of weeks with Dr. Hammond's sister, Mrs. Besta Hoppe. While in Michigan, Dr. and Mrs. Hammond attended the 50th anniversary of the Rho Chi (Pharmacy Honor Society). An academic convocation held at the University of Michigan's Rackham Building was followed by the reception in the Pharmacy Building. A reception and banquet was held at the Michigan Union at 6 p.m. Mrs. Hoppe was the Hammonds' guest at these functions.

Exercise is what your friend should take to get rid of the middle age spread.

**ELECTROLUX**  
**VACUUM**  
**CLEANERS**  
SALES and SERVICE  
**JAMES COX**  
Ph. 428-2931 or 428-8221  
Manchester

## AUCTION SALE

### SATURDAY, JUNE 17

Beginning at 10:30 a.m.

351 N. DANCER RD., DEXTER, MICH.

Located 8 miles west of Ann Arbor. Take Old Jackson Rd. to Dancer Rd. Go north on Dancer Rd. to 2nd house on left, or 6 miles east of Chelsea, or 1 1/2 miles south of Dexter-Chelsea Rd. Having sold my farm, I will sell the following personal property at public auction.

**ANTIQUES:** Buffet, buffalo robe, crocks, 2 butter churns, extension table with 6 leaves, milk cans, milk pails, strainers, old farm lanterns, horse collars, canthooks, barley fork, etc.

**HOUSEHOLD & MISC.:** Sofa and matching chair, 5-piece dinette set, corner settee, drop-leaf table, end tables, Shetland floor polisher, 3 steamer trunks, folding cot, 2-burner oil space heater, inside doors, 2 fireplace screens, bird cage, small oil space heater, twin metal laundry tubs, fruit jars, M-W dehumidifier, 6-pc. walnut dining room suite (table, 4 chairs and buffet), etc.

**TOOLS & MISC.:** Sawsmith 10" radial arm saw, two 2-wheel trailers, small tools, wood bits, 2 scythes, shovels, forks, push brooms, lawn roller, electric lawn trimmer, hand lawn mower, Toro reel power lawn mower (needs repairs), rotary lawn mower, barrel cart, tools for Simplicity garden tractor (includes 10" plow, cultivator, disc, cultipacker, spike tooth drag), pipe and pipe fittings, angle iron, rough lumber, 2 blow torches, shop vacuum, 2 wood augers, wheelbarrow, tree sprayer, hand seeder, 21 wooden bushel crates, small paint sprayer, 2 bench vises, 50 lbs. 16d nails, 50 lbs. 8d nails, many other items too numerous to mention.

**COME EARLY!** Inspection morning of sale.  
Not responsible for accidents day of sale.

**J. MITCHELL REID**  
PROPRIETOR  
Bob Perry and J. Wofford, Auctioneers

## EVENING FURNITURE AUCTION!

Having sold our home and moving to California, a public auction will be held, located 1 mile south of Chelsea on M-52 to Brown Drive, west 1/2 mile to house number 20080. (Brown Drive is located next to Shell Station on M-52.)

5 p.m. **FRI., JUNE 16** 5 p.m.

Phone Stockbridge 517 851-8042 **PRICE BROTHERS** Auctioneers Phone Stockbridge 517 851-8042

### HOUSEHOLD - NICE FURNITURE - CAR

RCA Whirlpool 21 cu. ft. upright freezer.  
Westinghouse electric stove.  
Zenith Early American Console 21-inch color TV.  
GE refrigerator.  
Maytag automatic washer.  
Westinghouse automatic dryer.  
Sun Glow solid maple bedroom suite with double dresser and chest of drawers.  
Solid maple buffet.  
Maple gateleg dining table.  
Piano and bench.  
Portable 19-inch TV with stand, nearly new.  
Combination Sparton radio and record player, good.  
Portable AM-FM radio.  
48-inch rollaway bed.  
Twin size Hollywood bed.  
5000 BTU Frigidaire window air conditioner.  
Four antique dining chairs.  
6-ft. steel executive desk and chair.  
Walnut buffet.  
Child's maple rocker.  
Round oak table.  
Maple cricket bedroom chair.  
Metal combination filing cabinet and safe.  
School desk.  
Kenmore 2-speed window fan.  
Four folding chairs.  
10 new hand braided rugs, assorted colors, 10-ft. and 7-ft.  
Two card tables.  
Storage cabinet.  
Table and floor lamps.  
12-ft. storage counter.  
18-ft. wooden base cabinet.  
Quantity of pictures.  
Records.  
Cooking utensils.  
Small appliances.  
Bedding. Set of china dishes.  
English bone china.  
230 sq. ft. Exelon floor tile.  
5-ft. step ladder.  
Extension ladder.  
Belt sander and sander saw.  
Jacobsen 21-inch power mower.  
Shallow well pump.  
Child's swing set.  
Picnic table.  
Other small items.

### CAR

1963 Buick LeSabre 2-door, automatic transmission, power steering, radio, runs good.  
**BE SURE TO ATTEND THIS SALE FOR NICE CLEAN FURNITURE.**

TERMS: Cash or check. Not Responsible for Accidents

LUNCH ON GROUNDS  
REMEMBER THE TIME — 5 P.M.

**Raymond & Willie Liebeck**  
OWNERS

## Undersheriff Owings Discusses County Law Enforcement

Harold Owings, Jr., undersheriff of Washtenaw county and Chelsea resident, described with slides the operations of the Sheriff's Department to members of the Chelsea Kiwanis Club Monday, June 12.

Although he is running for sheriff in the August primaries, Owings avoided politics and spoke on the subject at hand, concentrating on the streamlining techniques initiated by the department.

He stated, "I feel we have a very fine and sophisticated law enforcement agency. But we have to work within our budget, determined by the Washtenaw County Board of Commissioners."

Owings elaborated on the use of computers in the law enforcement field. The Sheriff's Department has established its central location and training area at the old Holy Ghost Seminary on Washtenaw Rd., Ann Arbor.

Here a new innovation, an IBM computer set-up, is capable of letting the man at the desk know exactly where the cars are located, and whether they are on a normal patrol or on a special call basis.

Owings explained, "We usually have seven to nine cars out throughout the county. The computer consists of a large map with lights to show where the car is, and the activity it is engaged in. This cuts down on the number of men needed to sit behind the desk."

The county jail utilizes closed-circuit TV and radio to monitor the cells. This, he said, also eliminates taking men off the streets to patrol the jail. The jail has a permanent capacity of 113 prisoners. At present, it holds 130 prisoners, many waiting to stand trial. "90 percent of the prisoners are in for felonies and murders," Owings related.

The Sheriff's Department also uses computers to provide a complete lost and found system. Washtenaw county officials share information with other law enforcement agencies both within and outside the county. "The Sheriff's Department is the perfect one for this activity because we are equipped for a fairly large area. Local agencies are too small to be really effective," he said.

The Department utilizes nine full-time detectives to check up on felonies and murders. One of the Washtenaw division men developed a simple blood analyzing kit now used by many other law enforcement agencies. With this kit, a detective can determine whether a sample 1) is blood, and 2) is human blood. The sample is then sent to the crime lab in Lansing for more detailed analysis.

The Washtenaw agency has one of the seven regional training centers for law enforcement agencies, and in Owings' opinion, "one of the more modern."

Patrol cars are equipped with all the safety features possible, and have high-powered engines for pursuit. They are made of heavy-duty materials to help sustain collision. They contain more than riot equipment, "because sheriff's men do more than bust student's heads, which is what a lot of people think." Owings stated that they have first-aid equipment that prepares the deputies to handle accidents and major disasters.

Each man in the department is required to complete a "Pursuit and Precision" course every three years to keep up on the methods and procedures used when following and capturing suspects.

Deputies no longer have to spend overtime typing up reports. They have tape recorders located in their cars, and throughout the day, relate what they are doing. When they check back in, a full-time typist is there to type their reports.

Other services performed by the Sheriff's Department include handling all fatal accident reports, of which there are about 70-80 per year. The department also maintains an emergency search-and-rescue water patrol unit. Owings stated that there are about 11-14 drownings per year in the county, which has a heavy use of lakes. The department also maintains a posse of men available to cover large areas of ground in searches. They have horses available to aid the search.

## District Court Proceedings

Week of June 7-13

David Hurley, Westland, pled guilty to speeding and was sentenced to \$21 fine and costs or 10 days.

Ray Deckert, Saline, pled guilty to speeding and was sentenced to \$21 fine and costs or 10 days.

Gwendolyn Briston, Saline, pled guilty to speeding and was sentenced to \$25 fine and costs or 10 days.

Richard Penn, Livonia, pled guilty to speeding and was sentenced to \$29 fine and costs or 10 days.

Charles Teske, Ann Arbor, pled guilty to speeding and was sentenced to \$31 fine and costs or 10 days.

David Kurdy, Lambertville, pled guilty to speeding and was sentenced to \$55 fine and costs or 10 days.

Michael Farrell, Ann Arbor, pled guilty to speeding and was sentenced to \$21 fine and costs or 10 days.

Meilyn Hosler, Milan, pled guilty to speeding and was sentenced to \$25 fine and costs or 10 days.

Jeffrey Harne, Cincinnati, O., pled guilty to speeding and was sentenced to \$75 fine and costs or 20 days.

Chester Guffin, Saline, pled guilty to speeding and was sentenced to \$31 fine and costs or 10 days. Also pled guilty to failing to transfer regular license plates and was sentenced to \$21 fine and costs or 10 days.

Frank Painter, Whitmore Lake, pled guilty to speeding and was sentenced to \$31 fine and costs or 10 days.

Timothy Williams, Whitmore Lake, pled guilty to littering and was sentenced to \$75 fine and costs or 20 days. Also pled guilty to being a minor with possession of alcohol in his vehicle and was sentenced to \$25 fine and costs or 10 days.

Robert Docket, Hamburg, pled guilty to driving without an operator's license and was sentenced to \$50 fine and costs or 10 days.

Douglas Kive, Saline, pled guilty to speeding and was sentenced to \$21 fine and costs or 10 days.

Barbara Dudas, Brooklyn, pled guilty to speeding and was sentenced to \$27 fine and costs or 10 days.

Carol Clock, Saline, pled guilty to speeding and was sentenced to \$25 fine and costs or 10 days.

### THANK YOU

Thank you to my many friends and relatives for all their lovely cards, beautiful flowers, and concerned callers during my recent illness. And a very special thanks to those who cared for my children.

Kathy Dault.

### THANK YOU

I wish in this way to thank all my relatives, friends, and neighbors and the Rev. Dickens for all the cards, flowers, and visits during my recent stay in the hospital and since my return home.

Duane Weiss.

### THANK YOU

I wish to thank all my friends, relatives, neighbors, and my fellow employees of Washtenaw County Road Commission for their many acts of kindness shown to my wife and me. Also for the cards, flowers, visits, and phone calls during my stay in the hospital following my accident and since my return home. Special thanks to the Rev. Siebert for his visit and prayers. Everything was greatly appreciated.

Oliver Walker.

### CARD OF THANKS

We wish to express our sincere thanks and appreciation for the many acts of kindness, cards, flowers, and memorials in memory of Emma L. Honbaum. A special thank you to Mr. and Mrs. Louis Burghardt, Mrs. Dale Bailey, and Mrs. Al Hayes.

Memrit and Arlene Honbaum and family  
Dave and Marilyn Elkins and family

### WATCHDOG TOO TAME

Baltimore—When Ronald Lapia stopped his car at a red light, he was asked if his dog sitting in the back would bite. He gave a negative reply and the man pulled out a gun and forced man and dog out and fled with his car.

Envy is the conclusive evidence of a little mind.

## Falling Tree in Village Causes Power Failure

It wasn't Mrs. O'Leary's cow but a fallen tree that caused the glowing sky and the electrical power failure Monday, June 12 at 1:50 a.m.

Village Administrator Frederick Weber stated that the tree, which fell on Washington St., hit three electric lines on the top of the pole. Since these were some of the primary lines for the village's power, the town experienced an electrical power failure.

The lines were isolated, the power was shut off, and repairs were made, Weber said. The tree falling made a great noise, and the burning lines and shower of sparks lightened the sky throughout the area.

"Most of the village was back in service by 7 or 8 a.m.," Weber stated.

Some damage was done to the transformers, separate from the burning lines. Michigan Electric Co. has been doing the repair and investigation work on that end of power failure.

In case of doubt, don't borrow and don't lend.

## June Wedding or Anniversary?

Wedding and reception invitations available in wide range of styles and prices.

**JUNE SPECIAL**  
10% DISCOUNT  
on all list prices  
for wedding stationery.

Come in and let us advise you on your needs.

The Chelsea Standard  
300 N. Main Ph. GR 5-3581

**GAMIBLES**  
110 North Main Phone 475-7472

**SOMETHING NEW FROM**  
**SUN**  
THE PEOPLE WHO  
HAVE BEEN TAKING CARE  
OF YOUR POOL NEEDS  
SINCE 1926

**FLOATING**  
**AUTOMATIC**  
**CHLORINE**  
**TABLET**  
**FEEDER**

FOR SWIMMING POOLS Only \$10<sup>95</sup>

NO REFILLING NECESSARY... IT'S A DISPOSABLE PLASTIC FLOAT CONTAINS 4 LBS. OF CONCENTRATED CHLORINE TABLETS WILL LAST FROM 2 TO 7 WEEKS DEPENDING ON SIZE OF POOL

AVAILABLE AT ALL DEPENDABLE SWIMMING POOL SUPPLY STORES  
SUN POOL CHEMICALS • DIVISION SUN CLEANSER CO.

## VILLAGE MOTOR SALES CAN OFFER YOU A GREAT-LOOKING FAMILY SEDAN WITH A...

**FREE VINYL ROOF.**



DODGE CORONET CUSTOM.

## The Dodge Boys Have It All!

- ★ GREAT CARS
- ★ GREAT DEALS
- ★ GREAT SAVINGS
- ★ BACKED BY DEPENDABLE SERVICE

Shop Now—During Dodge Dealin' Days

**3**

**CORONET TOPPERS IN STOCK.**  
IMMEDIATE DELIVERY.  
(AND YOUR PRESENT CAR IS WORTH MORE IN TRADE NOW.)

at **VILLAGE MOTOR SALES, INC.**  
1185 MANCHESTER ROAD CHELSEA, MICHIGAN

THERE ARE THE GOOD GUYS TO SEE:

TOM STOCK  
PAUL SIMON

**DEPEND ON THE DODGE BOYS**

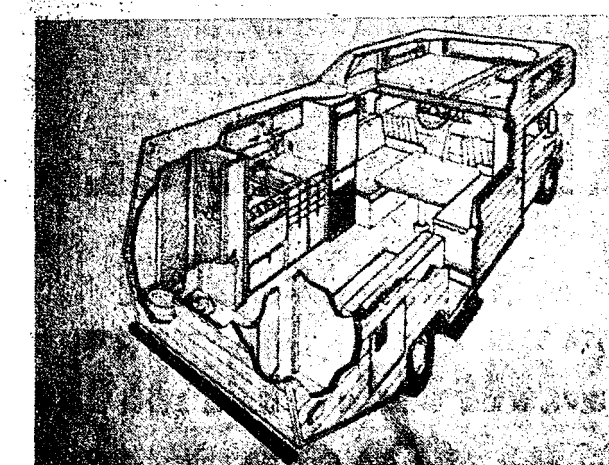
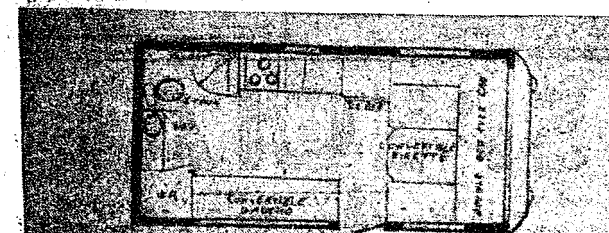
Want to sell a car? Use a Standard Want Ad!

**ANNUAL**  
**FATHER'S DAY**  
**BREAKFAST**  
**SUNDAY, JUNE 18**  
Serving from 7 a.m. to Noon  
at  
**Dexter**  
**American Legion Home**  
Sponsored By  
**American Legion Post 557**  
ADULTS: \$1.25 CHILDREN: 75c

**DODGE - TEC**  
**TWO GREAT NAMES**  
bringing you a great  
new life style!  
**DODGE CHALLENGER**  
**19' MINI MOTOR HOME**  
See Us Now for the Best Deal Around.  
Long Term Bank Financing available  
to suit your budget.



Here we combine the best features of a self-contained travel trailer with the mobility of a passenger car. Complete with efficient kitchen, shower, stool. Sleeps up to six in comfort. Dodge Challenger Mini Motor Home is the ultimate in roadability, design and compact adventure-living.



Sleeps 6 • 4 ft. Gas/Electric Refrigerator • 3-Burner LP Gas Range with Oven • 5" Cushions • One Piece Molded Shower • Toilet • 12 Volt Water Pump • 27 Gallon Water Supply Tank • Power Converter • Other equipment available to meet your own requirements.

CHASSIS BY DODGE  
INCLUDES DUAL REAR WHEELS  
**2 VEHICLES NOW IN STOCK**  
Come in and inspect this budget-priced complete motor home.

Open 8 a.m. to 6 p.m. Monday thru Friday  
Until 9 p.m. Thursday - 9 a.m. to 2 p.m. Saturday

**VILLAGE**  
**MOTOR SALES, INC.**  
IMPERIAL - CHRYSLER - DODGE - PLYMOUTH  
1185 MANCHESTER RD. PH. 475-8661



## The Rev. Harry Weeks Elected To Membership By Methodists

The Rev. Harry R. Weeks, Gregory, minister of the Salem Grove and North Lake United Methodist churches, was elected to full membership in the Detroit Annual Conference of the United Methodist Church Wednesday, June 7 at the 31st consecutive session of the conference, in Dawson Auditorium, on the campus of Adrian College.

The Rev. Weeks was ordained in Elder of the United Methodist Church Thursday evening by Bishop Dwight E. Loder, resident bishop of the Michigan area of the United Methodist Church.

The son of the Rev. and Mrs. Alan Weeks of Deckerville, the Rev. Weeks was recommended for a license to preach by the Charge Conference of the First United Methodist church of Ann Arbor, and was received as a probationary member of the Detroit Annual Conference and ordained a Deacon in the United Methodist Church in 1970.

The Rev. Weeks graduated from Harbor Beach Community High school in 1956. Asbury College, Wilmore, Ky., awarded him an AB degree in 1960, a BD degree in 1965, and a ThM degree in 1966. He received a MA degree from the University of Michigan in 1971.

Mrs. Weeks is the former Genevieve Rose McCallum, the daughter of Mr. and Mrs. Marvin McCallum of Jeddo. The Rev. and Mrs. Weeks are the parents of three children: Richard Alan, 8, Lois Robin, 4, and Harry Randall, 1.

Bishop Loder, when reading the list of ministerial appointments on June 7, assigned the Rev. Weeks to serve the Salem Grove and North Lake United Methodist churches.



REV. HARRY R. WEEKS

### Charged with Larceny

Chelsea Patrolmen McDougall and Sibert arrested Donald Ray Collinsworth, 18, at his residence for larceny from a building Monday, June 12 at 11:30 p.m. He was arraigned Tuesday, June 13 at 1:45 p.m., where he pled not guilty. Examination was set for 10 a.m. June 28. Collinsworth was released on \$100 cash bond.

## Area Residents Earn Degrees At Mich. State

Four area residents were graduated from Michigan State University during spring commencement exercises held Sunday, June 4 in Spartan Stadium.

One Chelsea resident, Brenda C. Reinecke, 801 W. Middle St., graduated with a bachelor of arts degree in sociology.

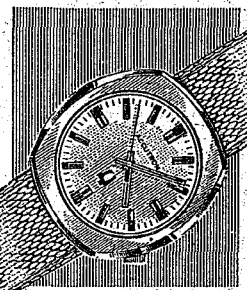
Three Manchester residents also received degrees. They are: Glenn A. Buss, 8375 Neal Rd., bachelor of science in mechanical engineering; Barbara J. Kemner, 19820 Sharon Valley, bachelor of science in foods; and Gary N. Neuffer, 304 N. Union, bachelor of science in fisheries and wildlife, with honors.

Michigan State conferred 5,500 degrees—1,345 for bachelors, 907 for masters, 152 for doctoral, 23 for educational specialist, 43 for veterinary medicine, and 30 for medical degrees.

Commencement speaker at the afternoon ceremonies was Osborn Elliott, board chairman and chief executive officer of Newsweek, Inc.

Honorary degrees were awarded to Elliott, Percy Julian, director of the Julian Research Center near Chicago, Russell Mawby, president of the W. K. Kellogg Foundation, and Henry L. Calkins, president of Waterways Navigation Co. of Detroit.

Dad Deserves Accutron®



ACCUTRON "101" Gold brass markers on a gilt dial. Attached basketweave band, \$165.

The Accutron movement does not depend on a balance wheel. Instead, an electronic-powered tuning fork keeps precise time through vibrations. In fact, Bulova guarantees monthly accuracy to within 1 minute.\*

ACCUTRON® by BULOVA

WINANS JEWELRY

\*We will adjust to this tolerance, if necessary. Guarantee is for one year.

## Consumers Council Warns Against Cosmetics Promotion

An item from the Michigan Consumers Council recently pertains to some activities which have been going on in Chelsea recently.

The Council warns that Turner Enterprises is still in action despite a decision by the Michigan Court of Appeals enjoining one of its subsidiaries, Koscot Interplanetary, Inc., from selling cosmetics distributorships.

Chelsea area people have been offered out-of-state trips in which they will learn about the "vast money-making opportunities available in Turner Enterprises and about the experiences of the company's founder, Glenn W. Turner."

This out-of-state tactic is a red flag warning to consumers. According to the Council the Michigan Court found Koscot in violation of the deceptive advertising

statutes, lottery laws, and public policy of the state of Michigan, so they move their "likely prospects" to Ohio by bus, after meetings in Ann Arbor, putting them up in a motel, and giving them the "motivation" with income claims presented at "Golden Opportunity meetings." After viewing Koscot's marketing plan in its most favorable light, the court said, "We are constrained to conclude that the defendant's scheme is a blatant attempt to extract money from investors through the use of misrepresented facts, exaggerated claims and statistics, undisclosed facts and false advertising."

The scheme, offered to employees in Chelsea business places over the past few weeks, according to the court "has all the earmarks of a lottery" because any money made will be purely by chance.

One profits, apparently, only if he can sell other distributorships, and the sale of cosmetics, the court said, is almost nil.

The court reports more than 300 distributorships and supervisoryships already sold in Michigan. At again \$2,000 to \$5,000 each, this indicates that at least one million

### Todd Sprague Honored At Open House Party

Todd Sprague, a 1972 graduate of Chelsea High school, was honored at an open house hosted by his parents, Mr. and Mrs. James Sprague, Sunday afternoon, June 11. Fifty friends and relatives attended the celebration. Todd will be attending the University of Tulsa in Oklahoma in the fall, where he plans to major in political science.

dollars of Michigan money is already tied up in this distribution superstructure.

Law enforcement agencies are investigating these recruitment efforts and the Consumers Council urges prospective investors to exercise a special degree of caution. The state of Kansas stopped both whole and retail Koscot and subsidiary operations and ordered the company to refund all monies recovered.

This spring, for the first time in its 80-year history, Central Michigan University graduated a class with three valedictorians. The three—two Michigan women and a male student from Austria—had perfect all-A scholastic records.

We are in favor of a vacation each season of the year, now being behind several.

Get a sun hat for that trip to the beach. Too much sun can age the skin. A ton of recycled paper represents 17 trees left growing in our forests.

**LaFONTE**  
Construction &  
Development Corp.

GENERAL CONTRACTORS

Will Build To  
Your Specifications

CUSTOM BUILDER - Residential, Commercial, Industrial  
COMPLETE HOME MODERNIZATION SPECIALISTS

★ Additions ★ Rec. Rooms ★ Cement Work  
★ Family Rooms ★ Roofing ★ Kitchens  
★ Attics ★ Siding ★ Patios

FREE ESTIMATES  
LICENSED BUILDERS

PHONE 475-2663  
525 N. MAIN, CHELSEA



# As your new Chevrolet dealer, we want to be the best you've ever known.

# And we want your new Chevrolet to be the best car you've ever owned.



We're starting fresh. New. And that means fresh new ideas on how to serve you better than you've ever been served before.

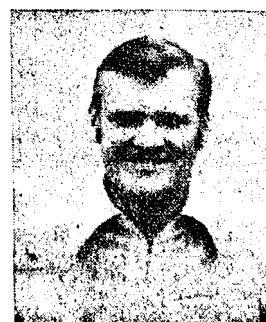
Like having the complete family of Chevrolets on hand. Ready to drive and compare feature by feature. Caprices. Impalas. Monte Carlos. Chevilles. Novas. Camaros. Corvettes. Trucks. And Vega, the little car that does everything well.

But we also realize that you want and need more than just a good new car. You've got to be able to rely on your dealer to give you the best and

most efficient service available. You've got to have his complete and personal attention. You've got to be able to trust him.

That's why we're not just trying to sell you a car. We're trying to sell you an entire dealership. One that you'll want to stay with from now on.

By now, you've probably got the idea you're important to us. Keep on thinking that way. Whenever you're ready for a car, or service, we're ready to prove it.



LLOYD BRIDGES

Chevrolet's building a better way to see the U.S.A. See us now.

# Lloyd Bridges Chevrolet Chevrolet

405 N. MAIN STREET. PHONE 475-1373

## SPECIAL

thru Wednesday, June 21, 1972

# BRAZIER CHEESEBURGER, FRIES and SMALL DRINK

# 89¢

(Some of the Brazier foods)



# brazier

901 S. MAIN ST., CHELSEA PHONE 475-2677